

SAAN KA MAN NARORON

1

RESTIE UMALI
Isinaayos para sa 2 boses ni
Lucio D. San Pedro

Moderato (Tenor) (A)

Sa-an ka man —
F

rit.

na-ro-ro-on sin-ta — pag-i-big kong wa-gas — ang'yong ma-

Dm Gm C7

(Soprano) (B)

kai-lan pa man — sa i-yo'y di li-li-mot —

da-ra-ma —

F Am - Dm / Ab Gm

pu- song u- haw sa 'yong pag- i- rog.

A7- Bm/D G7 Gm7/C Sa-

© F Dm7 Gm7 C Sa- an ka man na- ro- ro- on sin- ta pa-

F Dm7 Gm7 C an ka man na- ro- ro- on Sin-ta pa- nga- rap ko'y i- kaw

nga- rap ko'y i- kaw ma- hal ki- ta A- sa- han mong sa ha- bang

pag- kat ma- hal ki- ta A- sa- han mong sa ha- bany

C/Bb Cm/A G C6/F Bb Gm7 Dm/Db

pa-na-hon — a-la-a-la ki-ta Sa-an ka man na-ro-ro-on.

pa-na-hon — a-la-a-la ki-ta Sa-an ka man na-ro-ro-on sin-ta.

C *Am* *Am/A* *Gm7* *Gm7/C* *Fm7*

(Aa)

Sa-an ka man — na-ro-ro-on sin-ta — Pag-i-big kong wa-gas.

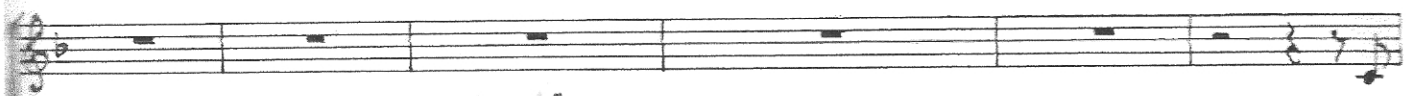
F *Dm7* *Gm7* *C7*

(Bb)

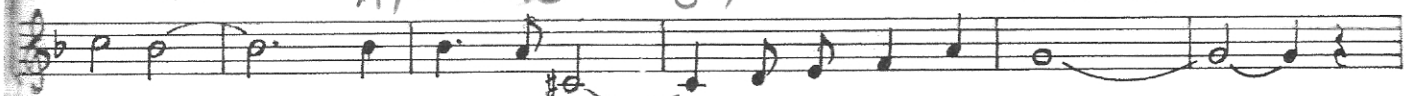
— ang'yong ma-da-ra-ma —

F *Am* *Dm/A*

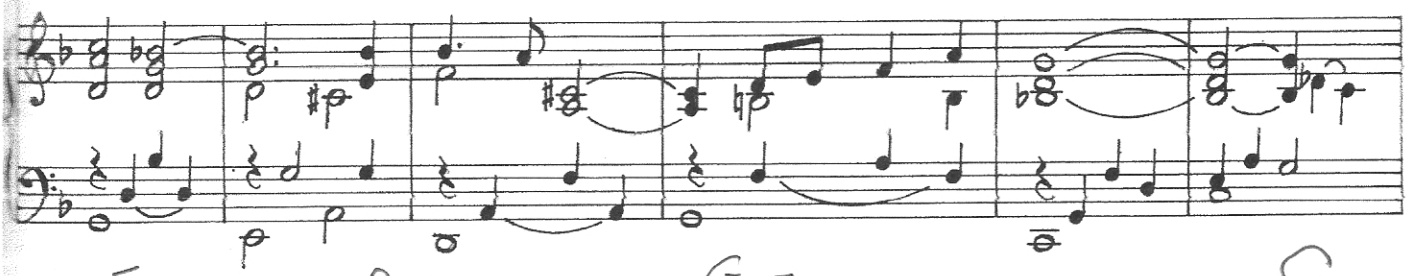
Bb/F *F* Kai-lan pa man — sa i-yoy



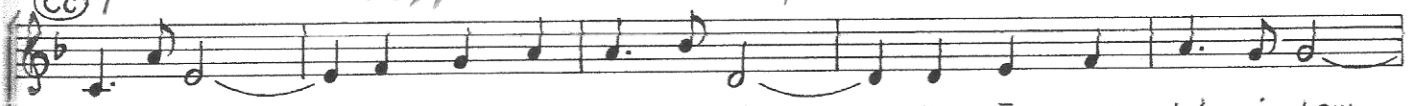
Gm A7 - Bm/D G7 Gm7/C



li-mot pu-song u-haw sa'yong pag-i-rog



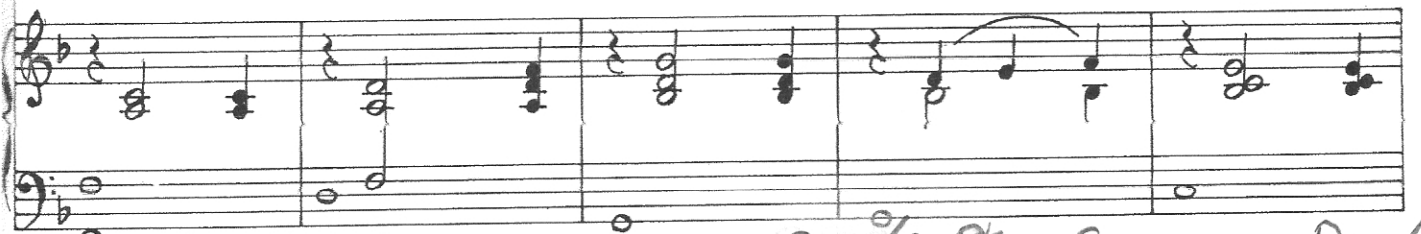
(C) F Dm7 Gm7 C



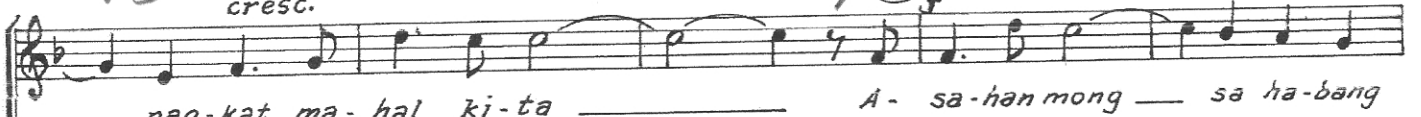
an ka man na-ro-ro-on sin-ta pa-nga-rap ko'y i-kaw



Sa-an ka man na-ro-ro-on sin-ta pa-



C/Bb cresc. Cm/A 1/G Cm6/F-Bb Dd f Gm7- Dm/Db



pag-kat ma-hal ki-ta A-sa-han mong sa ha-bang



nga-rap ko'y i-kaw ma-hal ki-ta A-sa-han mong sa ha-bang



pa-na-hon — a-la-a-la ki-ta Sa-an ka man na-ro-ro-on —

pa-na-hon — a-la-a-la ki-ta Sa-an ka man na-ro-ro-on —

C Am - Am/Ab - Gm7 Gm7/C - Bb - Gm/A

A-sa-han mong — sa ha-bang pa-na-hon — a-la-a-la ki-

A-sa-han mong — sa ha-bang pa-na-hon — a-la-a-la ki-

G - Gm7/F - Bb Gm7 Dim D - C Am Dim B/A

Gm7 - Gm7/C - F

ta Sa-an ka man na-ro-ro-on.

ta Sa-an ka man na-ro-ro-on.

allarg. f ff L.H. p rit.