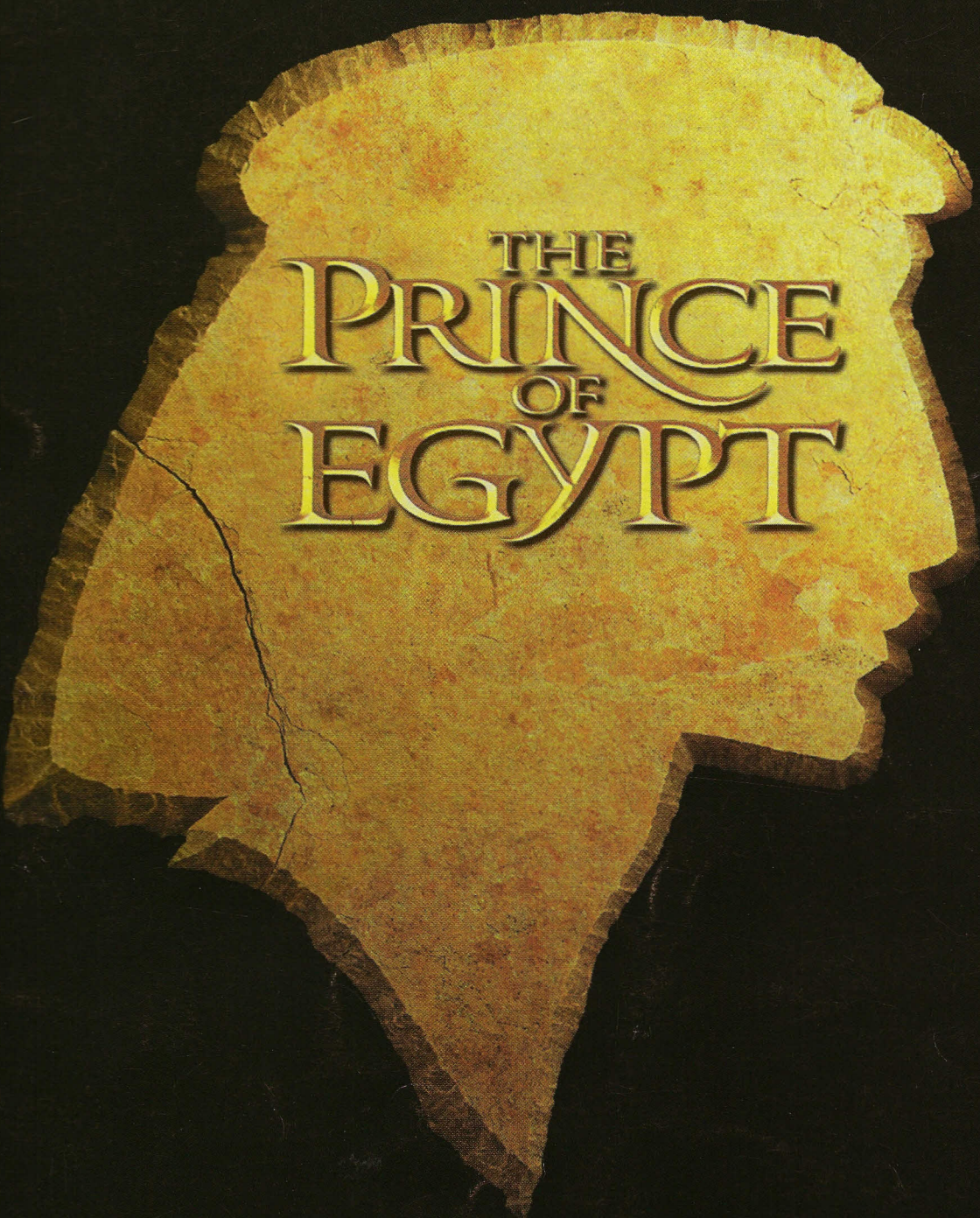


# WHEN YOU BELIEVE

(FROM THE PRINCE OF EGYPT)

PERFORMED BY  
WHITNEY HOUSTON AND MARIAH CAREY

WORDS AND MUSIC COMPOSED BY  
STEPHEN SCHWARTZ  
WITH ADDITIONAL MUSIC BY  
BABYFACE



DREAMWORKS  
PICTURES



# WHEN YOU BELIEVE

## (FROM THE PRINCE OF EGYPT)

Words and Music by Stephen Schwartz  
with Additional Music by Babyface

Slowly

B5



Bm



A



F#m7



Bm



3



Man - y nights we've prayed, with no proof an - y - one could hear.



*mf*

*mp legato*

with pedal

Gmaj9



Em7



F#m7



3



In our hearts a hope - ful song— we bare - ly un - der - stood. Now



B



A/C#



A/D



Esus4



we are not— a - fraid, al - though we know there's much to fear.



Copyright © 1997, 1998 SKG Songs (ASCAP) and Songs Of SKG (BMI)

Worldwide Rights for SKG Songs Administered by Cherry Lane Music Publishing Company, Inc.

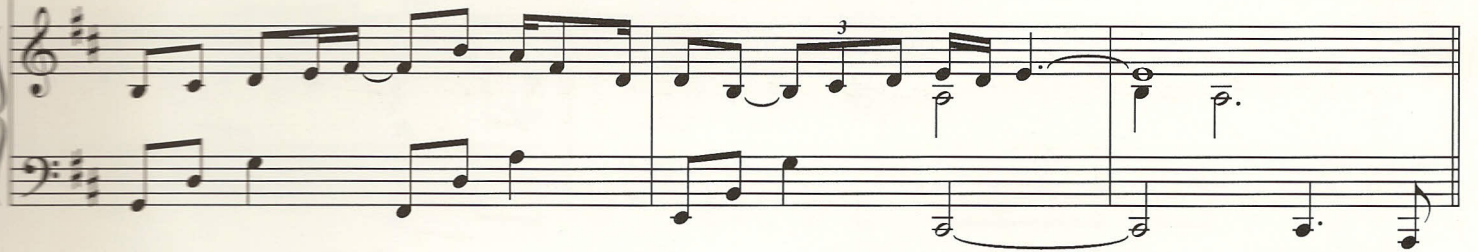
Worldwide Rights for Songs Of SKG Administered by Cherry River Music Co.

International Copyright Secured All Rights Reserved

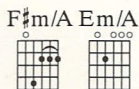




We were mov - ing moun - tains long - be - fore we knew we could. \_\_\_\_\_



There can be mir - a - cles, - when you be - lieve. \_\_\_\_\_ Though hope is frail, it's



hard to kill. Who knows what mir - a - cles - you can a - chieve? \_\_\_\_\_



When you be - lieve, some - how you will. You will when - you - be - lieve. -





Bm



Bm



A



In this time of fear, when—

prayer so of - ten proves in vain, hope seems like the sum - mer birds, too—

swift - ly flown a - way.— Yet now I'm— stand - ing here, my

heart so full— I can't ex - plain,— seek - ing faith and speak - ing words— I

F#m7



Bm



Gmaj9



Em7



F#m7



B



A/C#



A/D



Esus4



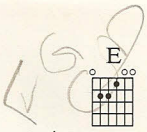
G



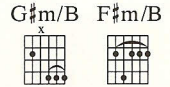
D/F#







nev - er thought I'd say:— There can be mir - a - cles,—



when you be - lieve.—— Though hope is frail, it's hard to kill.  
(When you be - lieve.)



Who knows what mir - a - cles— you— can a - chieve?— (You can a -



chieve?) When you be - lieve,—— some - how—— you will.——



F#m7

E

B/D#

E

C#m7

4fr.



You will when you believe.

Amaj9

Bsus4

B/A

A/C#

B/D#

2fr.



They don't always happen when you ask.

Esus4

E

B/D#

C#m7

A/C#

B/D#

4fr.



And it's easy to give in to your fear.

Esus4

E

F#m7

E/G#

Asus2



But when you're blinded by your pain, can't see.



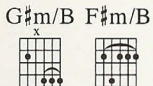
B



C#m7



— your way— clear through— the rain, a small— but still re - sil - ient voice— says



help is ver - y near.

There can be mir - a - cles,

when you be - lieve.

*cresc.*

*rit.*

*f a tempo*



Though hope is frail, it's hard to kill.

Who knows what mir - a - cles



you can a - chieve?

When you be - lieve,

some - how you will,





now you will. You will when you be - lieve.

— You — will — when you, you will when you — be —

Bmaj7

Tacet

3

3

— You — will — when you, you will when you — be —

mf



lieve, just be - lieve, just be -

mp



lieve. You will when you be - lieve.

3.95 in U.S.  
02500082  
Printed in the U.S.



0066-03 WHEN YOU BELIEVE/CAR 0365593  
09/09 0500



SHTMUSIC 4581

OUR PRICE any  
3.95

12-98

P.O. Box 430, Port Chester, NY 10573

EXCLUSIVELY DISTRIBUTED BY  
**HAL LEONARD CORPORATION**  
7777 W. BLUEMOUND RD. P.O. BOX 13819 MILWAUKEE, WI 53213