

Ouverture

Zu Heinrich Joseph v. Collins Trauerspiel

Coriolan

LUDWIG VAN BEETHOVEN (1770-1827)

Op. 62

Bassoon

Allegro con brio

Musical score for Bassoon, Op. 62, Allegro con brio. The score is written in bass clef with a key signature of two flats (B-flat and E-flat). It consists of eight staves of music, each starting with a measure number. The first staff (measures 1-11) features a series of chords with dynamic markings *ff* and articulation marks '2' and '3'. The second staff (measures 12-26) includes a five-measure rest, a dynamic marking *f*, and a first ending bracket labeled 'I.' with a *p cresc.* marking. The third staff (measures 27-33) shows a dynamic marking *f*, a first ending bracket labeled 'I.', and a *p cresc.* marking. The fourth staff (measures 34-40) begins with a *ff* dynamic and ends with a *sf* dynamic. The fifth staff (measures 41-49) is characterized by repeated *sf* dynamics. The sixth staff (measures 50-64) features a nine-measure rest, a dynamic marking *p cresc.*, a first ending bracket labeled 'a2', and a *ff* dynamic. The seventh staff (measures 65-73) includes a *cresc.* marking, a *ff* dynamic, and a *p cresc.* marking. The eighth staff (measures 74-82) starts with a *sf* dynamic, followed by a *p* dynamic, and ends with a *pp* dynamic.

80-85: Musical staff with bass clef, 6/8 time signature, and key signature of two flats. The staff contains a sequence of chords and eighth notes. A dashed line with 'cresc.' above it spans from measure 80 to 85. The dynamic marking '-ff' is placed at the end of the staff.

86-92: Musical staff with bass clef, 6/8 time signature, and key signature of two flats. The staff contains a sequence of chords and eighth notes. A dynamic marking 'sf' is placed at the end of the staff.

93-99: Musical staff with bass clef, 6/8 time signature, and key signature of two flats. The staff contains a sequence of chords and eighth notes. Three dynamic markings 'sf' are placed below the staff at measures 93, 95, and 97.

100-106: Musical staff with bass clef, 6/8 time signature, and key signature of two flats. The staff contains a sequence of chords and eighth notes. Dynamic markings 'p' and 'fp' are placed below the staff at measures 100, 102, 104, and 106. A 'II.' marking is placed below the staff at measure 104.

107-112: Musical staff with bass clef, 6/8 time signature, and key signature of two flats. The staff contains a sequence of chords and eighth notes. A dynamic marking 'a2' is placed above the staff at measure 108.

113-118: Musical staff with bass clef, 6/8 time signature, and key signature of two flats. The staff contains a sequence of chords and eighth notes. Dynamic markings 'p' are placed above the staff at measure 113 and below the staff at measure 118.

119-124: Musical staff with bass clef, 6/8 time signature, and key signature of two flats. The staff contains a sequence of chords and eighth notes. 'II.' markings are placed below the staff at measures 119 and 124.

125-131: Musical staff with bass clef, 6/8 time signature, and key signature of two flats. The staff contains a sequence of chords and eighth notes. A dashed line with 'cresc.' above it spans from measure 125 to 131. A 'II.' marking is placed below the staff at measure 131.

132-139: Musical staff with bass clef, 6/8 time signature, and key signature of two flats. The staff contains a sequence of chords and eighth notes. A dynamic marking 'p' is placed below the staff at measure 132. A 'II.' marking is placed below the staff at measure 139.

140-145: Musical staff with bass clef, 6/8 time signature, and key signature of two flats. The staff contains a sequence of chords and eighth notes. A dynamic marking 'f' is placed below the staff at measure 140.

144 *p* *cresc.* *ff*

150 *ff*

158 *sf sf ff sf ff*

168 *sf sf sf sf sf sf sf sf*

176 *p* *cresc.*

185 *ff* *p*

193 *ff* *p*

202 *f* *p* *p*

208

cresc.-----*ff*

214

ff *sf*

I.
II.

221

sf

I.
II.

227

p

II.

234

fp *f*

a2

240

p *cresc.*

253

f *p* *f* *p* *f* *p* *cresc.*

261

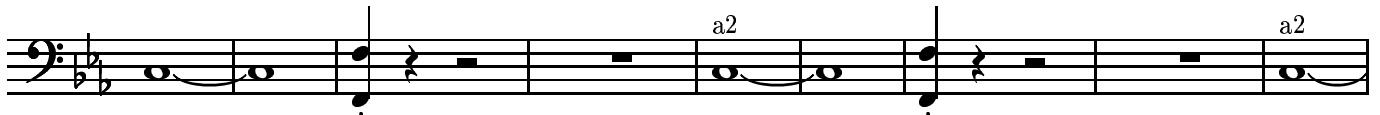
ff *sf* *sf* *sf*

267

sf *sf* *sf* *ff* *sempre*



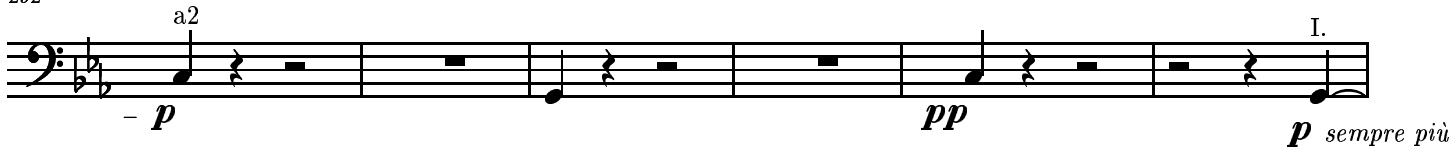
276



285



292



298



305

