

Key of F

I Belong (1 of 2)

Mildred Rainey & Kathryn Scott

INTRO

F C/E B \flat /D F C/E B \flat /D

VERSE 1

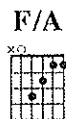
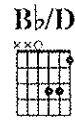
F C/E B \flat /D F C/E B \flat /D C/E
 Not angels, nor demons, no power on earth or heaven
 F C/E B \flat /D F C/E B \flat /D C/E
 Not distance, nor danger, no trouble now or ever
 Gm7 F/A B \flat 2
 Nothing can take me from Your great love
 Gm7 F/A Csus C
 For- ever this truth remains

CHORUS

F C/E B \flat /D C/E
 I belong, belong to You
 F C/E B \flat /D C/E
 I belong, belong to You
 F C/E B \flat /D C/E F C/E B \flat /D C/E

VERSE 2

F C/E B \flat /D F C/E B \flat /D C/E
 Not hardship, nor hunger, no pain or depth of sorrow
 F C/E B \flat /D F C/E B \flat /D C/E
 Not weakness, nor failure, no broken dream or promise
 Gm7 F/A B \flat 2
 Nothing can take me from Your great love
 Gm7 F/A Csus C
 For- ever this truth remains



I Belong (2 of 2)

CHORUS

F C/E B \flat /D C/E

I belong, belong to You

F C/E B \flat /D C/E

I belong, belong to You

F C/E B \flat /D C/E

I belong, belong to You

F C/E B \flat /D C/E

I belong, belong to You

F C/E B \flat /D C/E F C/E B \flat /D C

F C/E B \flat /D F C/E B \flat /D

Gm7 F/A B \flat 2

Nothing can take me from Your great love

Gm7 F/A Csus C

For- ever this truth remains

Gm7 F/A B \flat 2

Nothing can take me from Your great love

Gm7 F/A Csus C

For- ever this truth remains

CHORUS G D/F# C/E D/F# G

F C/E B \flat /D C/E

I belong, belong to You

F C/E B \flat /D C/E

I belong, belong to You

F C/E B \flat /D C/E

I belong, belong to You

F C/E B \flat /D C/E F

I belong, belong to You

..Neither death nor life, neither angels nor demons...nor any powers...nor anything else... will be able to separate us from the love of God... Romans 8:38-39 (NIV)

I Belong

Words and Music by
MILDRED RAINEY and KATHRYN SCOTT

♩ = 76

Piano introduction in F major, 4/4 time. The right hand features a melodic line with eighth notes and quarter notes, while the left hand provides a simple harmonic accompaniment with chords. Chords are labeled as F, C/E, Bb/D, F, C/E, and Bb/D.

5 VERSE
Worship Leader

Musical notation for the first two lines of the verse. The vocal line is in F major, 4/4 time. The piano accompaniment follows the same harmonic structure as the introduction. Chords are labeled as F, C/E, Bb/D, F, and C/E.

1. Not an - gels, nor de - mons, no pow'r on
2. Not hard - ship, nor hun - ger, no pain or

9

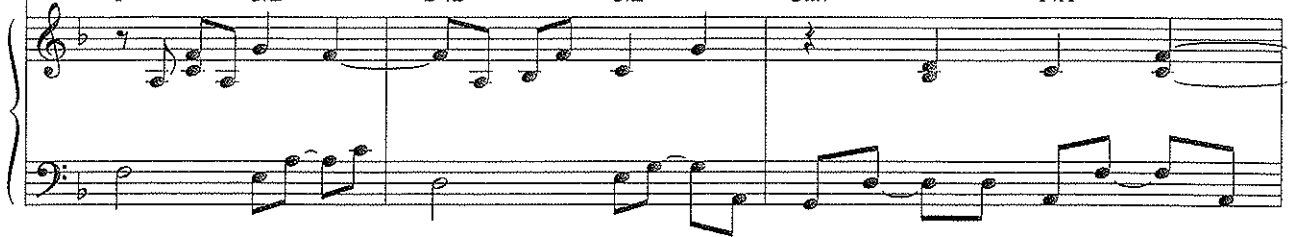
Musical notation for the third line of the verse. The vocal line continues the melody. The piano accompaniment continues with the same harmonic structure. Chords are labeled as Bb/D, C/E, F, C/E, and Bb/D.

earth or heav - en; Not dis - tance, nor dan - ger,
depth of sor - row; Not weak - ness, nor fail - ure,



no trou - ble now — or — ev - er; Noth - ing can take — me from Your —
no bro - ken dream — or — prom - ise;

F C/E Bb/D C/E Gm7 F/A

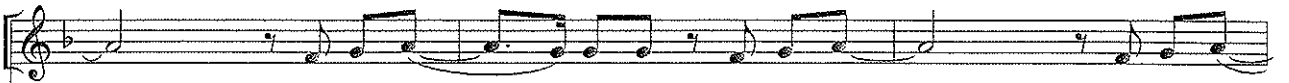


— great — love; — For - ev - er this truth — re - mains. — I be - long, —

Bb2 Gm7 F/A Csus C

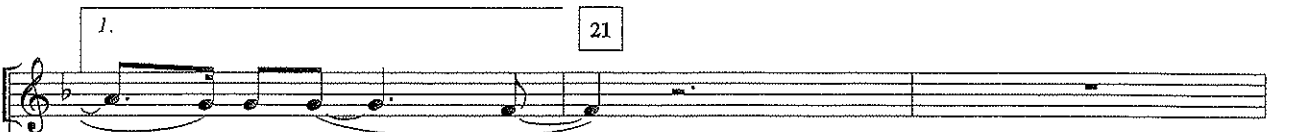
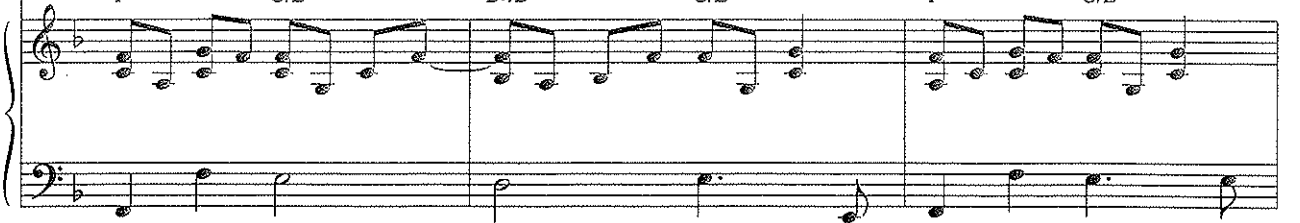


17 CHORUS



I be - long — to You; I be - long, — I be - long —

F C/E Bb/D C/E F C/E



to You.

Bb/D C/E F C/E Bb/D C/E



music by
OTT



er,
re,



F C/E Bb/D C/E

2. 26

to You; I be-long, I be-long to You; I be-long,

Bb/D C/E F C/E Bb/D C/E

30

I be-long to You.

F C/E Bb/D C/E F C/E

W.L. ad libs

Bb/D C/E F C/E Bb/D

34

F C/E Bb/D F C/E Bb/D

38

Noth-ing can take me from Your great love; For - ev - er this truth re - mains;

Gm7 F/A Bb2 Gm7 F/A

42

Noth - ing can take me from Your great love; For -

Csus C Gm7 F/A Bb2

GAB →

ev - er this truth re - mains. I be - long,

Gm7 F/A Csus C

46

CHORUS

I be - long to You; I be - long, I be - long

F C/E D/F# Bb/D C7/F# F C/E/F#

to You; I be - long ——— I be - long ——— to You; I be - long, —

Bb/D/E *C/E* *D/F#* *F* *G* *B/E* *C/E* *Bb/D/E* *C/E* *D/F#*

I be - long ——— to You. ———

F *G* *C/E* *D/F#* *Bb/D/E* *C/E* *B/E* *D/F#* *F* *G*

Medley options: Lord You Are Good (MERKEL); He Knows My Name.