

# Hallelujah!

from "The Messiah"

G.F.HANDEL

(1685-1759)

arr. A. Christopherson

**Allegro**

Soprano Saxophone

Alto Saxophone (alternative to Soprano Sax)

Alto Saxophone

Tenor Saxophone

Baritone Saxophone

4

S

A1

A2

T

B

8

S

A1

A2

T

B

*mf*

*mf*

*mf*

*mf*

*mf*

13

S  
A1  
A2  
T  
B

This system contains five staves labeled S, A1, A2, T, and B. The music is in a key with three sharps (F#, C#, G#) and a common time signature. Measures 13-17 show vocal lines with various rhythmic patterns, including eighth and sixteenth notes, and rests. The bass line (B) provides a steady accompaniment.

18

S  
A1  
A2  
T  
B

This system contains five staves labeled S, A1, A2, T, and B. Measures 18-20 continue the vocal and instrumental parts. The vocal lines (S, A1, A2, T) feature more complex rhythmic figures, while the bass line (B) remains active with a consistent accompaniment.

21

S  
A1  
A2  
T  
B

This system contains five staves labeled S, A1, A2, T, and B. Measures 21-23 show the continuation of the musical piece. The vocal parts (S, A1, A2, T) and the bass line (B) are clearly defined with their respective notes and rests.

24

S  
A1  
A2  
T  
B

This system contains measures 24, 25, and 26. It features five vocal staves: Soprano (S), Alto 1 (A1), Alto 2 (A2), Tenor (T), and Bass (B). The music is in a key with three sharps (F#, C#, G#) and a common time signature. Measures 24 and 25 show rhythmic patterns with eighth and sixteenth notes, while measure 26 has a more sparse arrangement with some rests.

27

S  
A1  
A2  
T  
B

This system contains measures 27, 28, 29, and 30. It features five vocal staves: Soprano (S), Alto 1 (A1), Alto 2 (A2), Tenor (T), and Bass (B). The music continues with rhythmic patterns. Dynamic markings *f* (forte) and *p* (piano) are used to indicate volume changes. For example, in measure 29, the Soprano and Bass parts are marked *f*, while the Alto parts are marked *p*. In measure 30, the Soprano and Alto parts are marked *p*, while the Tenor and Bass parts are marked *f*.

31

S  
A1  
A2  
T  
B

This system contains measures 31, 32, 33, and 34. It features five vocal staves: Soprano (S), Alto 1 (A1), Alto 2 (A2), Tenor (T), and Bass (B). The music continues with rhythmic patterns. Dynamic markings *f* (forte) are used in measures 32, 33, and 34 across all vocal parts.

37

Musical score for voices S, A1, A2, T, and B, measures 37-41. The score is in G major (one sharp) and 4/4 time. The Soprano (S) part begins with a half note G4, followed by quarter notes A4, B4, and C5. The Alto 1 (A1) part begins with a half note G4, followed by quarter notes A4, B4, and C5. The Alto 2 (A2) part begins with a half note G4, followed by quarter notes A4, B4, and C5. The Tenor (T) part begins with a half note G3, followed by quarter notes A3, B3, and C4. The Bass (B) part begins with a half note G2, followed by quarter notes A2, B2, and C3. The key signature has one sharp (F#) and the time signature is 4/4.

42

Musical score for voices S, A1, A2, T, and B, measures 42-45. The score is in G major (one sharp) and 4/4 time. The Soprano (S) part begins with a half note G4, followed by quarter notes A4, B4, and C5. The Alto 1 (A1) part begins with a half note G4, followed by quarter notes A4, B4, and C5. The Alto 2 (A2) part begins with a half note G4, followed by quarter notes A4, B4, and C5. The Tenor (T) part begins with a half note G3, followed by quarter notes A3, B3, and C4. The Bass (B) part begins with a half note G2, followed by quarter notes A2, B2, and C3. The key signature has one sharp (F#) and the time signature is 4/4.

46

Musical score for voices S, A1, A2, T, and B, measures 46-50. The score is in G major (one sharp) and 4/4 time. The Soprano (S) part begins with a half note G4, followed by quarter notes A4, B4, and C5. The Alto 1 (A1) part begins with a half note G4, followed by quarter notes A4, B4, and C5. The Alto 2 (A2) part begins with a half note G4, followed by quarter notes A4, B4, and C5. The Tenor (T) part begins with a half note G3, followed by quarter notes A3, B3, and C4. The Bass (B) part begins with a half note G2, followed by quarter notes A2, B2, and C3. The key signature has one sharp (F#) and the time signature is 4/4. The word "optional" is written below the A1 staff in measure 49.

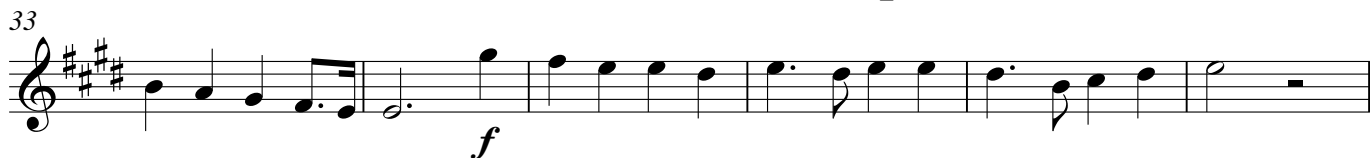
# Hallelujah!

from "The Messiah"

G.F.HANDEL  
(1685-1759)

arr. A. Christopherson

**Allegro**



Alto Saxophone  
(alternative to  
Soprano Sax)

Sheet music supplied by: [www.music-scores.com](http://www.music-scores.com)

# Hallelujah!

from "The Messiah"

G.F.HANDEL  
(1685-1759)

arr. A. Christopherson

**Allegro**

*f*

5

9

*mf*

13

17

21

25

28

*f* *p*

33

*f*

39

45

# Hallelujah!

from "The Messiah"

G.F.HANDEL  
(1685-1759)

arr. A. Christopherson

**Allegro**

5

9

13

17

20

23

27

31

37

42

46

# Hallelujah!

from "The Messiah"

G.F.HANDEL  
(1685-1759)

arr. A. Christopherson

**Allegro**

*f*

5

9 *mf*

13

17

20

24

27 *f* *p*

32 *f*

38

43

46



# Hallelujah!

from "The Messiah"

G.F.HANDEL  
(1685-1759)

arr. A. Christopherson

**Allegro**

4 *f*

8 *mf*

13 *f*

17 *p*

23 *f*

27 *f* *p*

31 *f*

37 *f*

42 *f*

46 *f*