

# Volume 68


# CONTENTS

Tunes included in this volume are:

- |  |   |
|--|---|
| 1. <b>CONFIRMATION</b> (Play each key once)        | 4. <b>ALL THE THINGS YOU ARE</b> (Play each key once)       |
| 2. <b>STELLA BY STARLIGHT</b> (Play each key once) | 5. <b>THIS I DIG</b> (Play each key twice)                  |
| 3. <b>IT'S YOU OR NO ONE</b> (Play each key twice) | 6. <b>GIANT STEPS</b> (Play first key 4 times, then 2 each) |

Take note of how many times each key is played on the recording - if you play the melody, THAT is the first key.

Introduction .....ii  
 Discography .....iii

  **Concert Key & Bass Clef Instruments Chord/ Scale Progressions** .....1  
 NOTE: Bass Clef Players . . . you will share the same chord progressions with concert key instruments. However, *Bass Clef Melodies* are included following the concert key, treble clef melodies.

 **Bb Instrument Songs & Chord/ Scale Progressions** .....33

 **Eb Instrument Songs & Chord/ Scale Progressions** .....63

## Jamey's Notes to the Musician

For years it has been a goal of Jazz musicians to be able to improvise in all twelve keys over various chord progressions without stumbling or hesitation. It is said that the great Charlie Parker practiced the blues, rhythm changes and the chord progressions to *Cherokee* in all twelve keys.

We already have several Play-A-Long sets that present various chord/scales or blues in all twelve keys (Volumes 16, 21, 24, 42 and 57). The song *Cherokee* is presented in all twelve keys in Volume 61 "Burning."

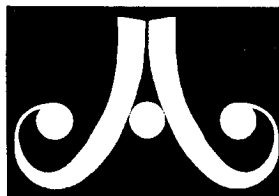
In Volume 67 and 68 you'll find songs that form part of the basic Jazz Library *presented in all twelve keys*. You may want to begin by playing by ear without looking at the book. If your CD player has the feature *AB repeat* you may want to isolate one key or one section of a chorus and work that section over and over.

**Published by**  
**JAMEY AEBERSOLD JAZZ, INC.**  
 P.O. Box 1244  
 New Albany, IN 47151-1244

**Graphics by David Silberman**  
**and Pete Gearhart**  
**Cover Design by**  
**Jamey D. Aebersold**

Copyright © 1995 by Jamey Aebersold  
 All Copyrights Used By Permission  
 International Copyright Secured

No portion of this book may be reproduced in any way without written permission from the publisher.



# INTRODUCTION

You've always thought there had to be a better way to get fluent on your horn than wearing out the exercise books, and now you have it in your hand. Many greats have espoused the wisdom of learning, say, the blues in all twelve keys, but *Giant Steps? All The Things You Are?* Now it's easy and fun. The next time a singer wants to do *Stella By Starlight* in G Flat and you're expected to play a coherent chorus, you'll be ready. This album is a bit tougher than its companion, *Tune Up (Vol. 67)*. The tempos are brighter and the tunes have more difficult chord progressions. Getting comfortable with both albums should prepare you for most situations.

The title tune has been considered a test of skill for improvisers since Coltrane recorded it in 1959 on Atlantic. He reputedly dreamed of the changes, which give approximately equal weight to three key centers a major third apart from each other, and they've been giving players nightmares ever since. Nothing comes out of thin air, of course, and Coltrane was certainly familiar with the Richard Rodgers show tune *Have You Met Miss Jones?* (a play-a-long version is on Aebersold Vol. 25), whose bridge is a direct ancestor of *Giant Steps*. Another important ancestor is the turnaround in the last two bars of *Lady Bird* (Aebersold Vol. 38) or *Half Nelson* (Aebersold Vol. 5); the latter Coltrane recorded as a sideman with Miles Davis. *This I Dig* is an Aebersold original closely related to Hank Mobley's *This I Dig of You* (Aebersold Vols. 38 & 59). The chords don't present any major obstacles, so it's ideal for working on in all the keys. *It's You Or No One* dates from a 1948 Doris Day movie, composed by Jule Styne, who has written many other tunes (*I Fall In Love Too Easily, Just In Time, You Say You Care, Time After Time*, etc.) that jazzmen favor. Speaking of movies, *Stella By Starlight* dates from a 1944 film. *Confirmation* is an AABA bop original by Charlie Parker which anticipates many blues tunes (such as Parker's own *Blues For Alice*) in which the third bar of the tune moves to the relative minor. The oldest tune on the record is Jerome Kern's *All The Things You Are*, dating from a 1939 show. Kern himself thought the tune was too difficult to catch on with the public, but it has become one of his most memorable efforts, recorded by artists as diverse as Placido Domingo, Liberace and Michael Jackson (bet you always wondered what they had in common). Dizzy Gillespie's 1945 recording with Charlie Parker brought the tune into the jazz fold.

The rhythm section is drawn from faculty at the 1995 Aebersold jazz camps. San Francisco pianist Mark Levine traces a recording career that goes back two decades as a leader and sideman. Todd Coolman, whose bass work has graced many a play-a-long album, lists stints with James Moody, Benny Golson, Horace Silver and the Mel Lewis Jazz Orchestra among his credits. Lynn Seaton, who was recently mentioned in print as one of jazz's best bassists by no less an authority than Milt Hinton, lists work with the Count Basie Orchestra, Woody Herman, Diane Schuur and Frank Wess on his resume. And drummer Barry Ries, whose trumpet work (!) can be heard on albums by Lionel Hampton, Don Sebesky and John Fedchock, recently moved from New York to Cincinnati.

Working with these tunes in all keys should go a long way toward getting your horn under control, but never lose sight of the final goal - making a musical statement. A well placed halfnote or rest will beat a stream of eighth notes out of the scale book any day.

Phil Bailey 9/24/95

# DISCOGRAPHY

## All The Things You Are (1939)

Music by Jerome Kern, words by Oscar Hammerstein II.

Introduced by Hiram Sherman, Frances Mercer, Hollace Shaw and Ralph Stuart in the musical *Very Warm for May*. Also featured in several films. Influential jazz recording by Dizzy Gillespie with Charlie Parker.

Joe Albany/Warne Marsh (Riverside OJCCD-1749-2)  
Howard Alden/George Van Eps (Concord CCD-4513)  
Leonardo Armuedo/Rein Van De Geyn (Challenge CHR-70008)  
Chet Baker (Pacific Jazz B2-97161)(Verve 837 475-2; 314-516-939-2; 314-519-903-2)  
Richie Beirach (alone)(Concord CCD-4518)  
Ran Blake (I.A.I. 123842-2)  
Paul Bley Quartet (STEE SCH-31274)  
Brass Connection (Jazz Alliance TJA-10014)  
Anthony Braxton (Hat Art ART-CD-6119)  
Nick Brignola (Reservoir RSR CD 112)  
Clifford Brown (2 takes)(Prestige OJCCD-358-2)  
Dave Brubeck Quartet (Atlantic SD 1684-2)(Fantasy OJCCD-047-2)(Fantasy FCD-24728-2)  
(Fantasy FCD-60-013)  
Jimmy Bruno Trio (Concord CCD-4532)  
Don Byas (Black Lion BLCD760167)  
Don Byas/Bud Powell (Impulse GRD-150)  
Ann Hampton Callaway (DRG 91411)  
Betty Carter (Roulette B2-95333)(Verve 314-519-851-2)  
Ron Carter/Jim Hall (Concord CCD-4245)  
Serge Chaloff (Mosaic MD4-147)  
Buddy Childers/Willie Smith (Black Lion BLCD760171)  
Jody Christian (Delmark DD-454)  
Rosemary Clooney (Concord CCD-4364)  
Al Cohn w. Al Porcino (Red Baron JK 57334)  
Larry Coryell (Muse MCD-5360)  
Sonny Criss (Muse MCD-6015; MCD-5068)  
Miles Davis/Jimmy Forrest (Prestige PCD-24117-2)  
John Dennis Trio w. Mingus, Roach (Debut OJCCD-1843-2)  
Paul Desmond/Gerry Mulligan (RCA Bluebird 9654-2-RB)  
Dion & the Belmonts (Laurie 3CD-102)(of minimal jazz interest)  
Dorothy Donnegan (Chiaroscuro CRD-323)  
Paquito D'Rivera (Columbia CK 40583)  
Eastern Rebellion (Cedar Walton et al)(Musicmasters 65081-2)  
Duke Ellington (Columbia CK 44444)(Laserlight 15785)  
Don Ellis (Candid CCD-79082)  
Booker Ervin (Prestige OJCCD-779-2)  
Bill Evans (alone)(Milestone MCD-9195-2; Riverside 12RCD-018-2)  
Bill Evans (alone; medley w. Midnight Mood)(Verve 833 801-2)  
Bill Evans Trio (Riverside OJCCD-263-2; 12RCD-018-2)  
Don Fagerquist Octet (VSOP 4-CD)  
Ella Fitzgerald w. Nelson Riddle (Verve 823 445-2; 314-519-832-2)  
Bob Florence Limited Edition (USA USACD-989)  
Bruce Forman (Concord CCD-4332)  
Erroll Garner (Jazz Anthology 550042)(Savoy SV-0244)  
Stan Getz (Verve 314-517-171-2; 314-519-903-2; 314-517-330-2)  
Dizzy Gillespie (Savoy SV-0152; Musicraft MVSCD-53)  
Benny Goodman (Musicmasters 5047-2-C)  
Stephane Grappelli (GRP GRD-9542)  
Johnny Griffin (Blue Note B2-81559)  
Jim Hall (Concord CCD-4298)(Telarc CD-83365)(Musicmasters 5050-2-C)  
Lin Halliday (Delmark DE-458)  
Scott Hamilton (Concord CCD-4254)(Concord CCD-4583)  
Hampton Hawes (Contemporary OJCCD-316-2)  
Coleman Hawkins (same master as Bud Powell)(Storyville STCD 4112)  
Jimmy Heath (Riverside OJCCD-1854-2)(Riverside OJCCD-6006-2)  
Bill Henderson (Discovery 70932-2)  
Joe Henderson (Blue Note B2-28879)  
Fred Hersch Trio (Chesky JD-90)  
Elmo Hope Trio (Prestige OJCCD-1751-2)  
Milt Jackson (Kenny Hagood, vcl)(Blue Note B2-81509)  
Ahmad Jamal (Telarc CD-83327)  
Keith Jarrett/Gary Peacock/Jack DeJohnette (ECM 1255-2)(ECM 1420-2)  
Hank Jones/Bill Evans (sax)/Red Mitchell (Evidence ECD-22072-2)  
Roger Kellaway/Gene Bertoncini/Michael Moore (Chiaroscuro CRD-315)  
Stan Kenton (Hindsight HCD-407)(Pliz America 442048-2)  
Lee Konitz (Evidence ECD-22117-2)  
Lee Konitz/Gil Evans Duo (Verve 314-511-621-2)  
Birelli LaGrene (Blue Note B2-95263)  
Gary Le Mel (Blue Note B2-29479)  
Eddy Louiss/Michel Petrucciani (Dreyfus FDM-36568-2)  
Adam Makowicz (Concord CCD-4575)  
Kitty Margolis (Mad-Kat MKCD-1001)  
Rob McConnell & the Boss Brass (Concord CCD-4458)  
Jim McNeely (Concord CCD-4522)  
Marian McPartland Trio (Savoy SV-0160)  
Carmen McRae (Decca GRD-631)(Pliz America 449333-2)  
Yehudi Menuhin/Stephane Grappelli (Angel CDM-69219)  
Helen Merrill (Pro Arte CDP-708)  
Pat Metheny/Dave Holland/Roy Haynes (Geffen 2-24293)  
Charles Mingus w. Parker, Gillespie et al (Debut 12DCD-4402-2)(same master as The Quintet)  
Modern Jazz Quartet (Prestige OJCCD-125-2)  
Modern Jazz Quartet w. Woods (Atlantic 82538-2)  
Paul Moer Trio (Del Fi DFCD-71225-2)

Thelonious Monk (same master as Milt Jackson)(Blue Note B2-30363)  
Buddy Montgomery (Marlena Shaw vcl)(Landmark LCD-1512-2)  
Tete Montoliu (Soul Note 121250-2)  
Frank Morgan/George Cables (Contemporary CCD-14035-2)  
Frank Morgan/McCoy Tyner (Contemporary CCD-14039-2)  
Frank Morgan Quintet (Contemporary CCD-14026)  
Paul Motian w. Lovano (JMT 834 440-2)  
Gerry Mulligan/Chet Baker (Pacific Jazz B2-46857)  
Roger Neumann BB (Sea Breeze CDSB-102)  
Marty Paich Quartet w. Pepper (VSOP 10)  
Charlie Parker (Parker out; Barney Kessel feat)(Verve 837 141-2)  
Charlie Parker w. Gillespie BB (Philology W-843-2)  
Charlie Parker (Philology W-846-2)(Philology 844)(Storyville STCD 4031)  
Joe Pass (alone)(Pablo PACD-2310-708-2)  
Joe Pass/Red Mitchell (Verve 314-512-603-2)  
Art Pepper (Contemporary OJCCD-389-2)  
Bud Powell w. Hawkins, Pettiford, Clarke (Black Lion BLCD760104)(same master as Coleman Hawkins)  
Andre Previn (Black Lion BLCD760189)(Contemporary OJCCD-1787-2)  
Andre Previn/Joe Pass/Ray Brown (Telarc CD-83302)  
The Quintet (Parker, Gillespie, et al)(Fantasy OJCCD-044-2)(same master as Charles Mingus)  
Jimmy Raney (Criss Cross CR15S 1019 CD)  
Freddie Redd (Triloka 182-2)  
Django Reinhardt (RCA 66468-2)(RCA Bluebird 9988-2-RB)  
The Ritz (Denon CY-1839)  
Sonny Rollins/Coleman Hawkins (RCA Bluebird 2179-2-RB, 66617-2)  
Sonny Rollins (Blue Note B2-46518)  
Gonzalo Rubalcaba (Blue Note B2-95478)  
Howard Rumsey's Lighthouse Allstars (Contemporary OJCCD-151-2)  
Mongo Santamaria (Fantasy FCD-24734-2)  
Hal Schaefer (Discovery 74002-2)  
John Scofield (Gramnavision R2 79400)  
Derek Smith/Dick Hyman (Musicmasters 5042-2-C)  
Jimmy Smith (Mosaic MD3-154)  
Martial Solal (ADDA 596902)  
Christoph Spendel Trio (Blue Flame CD-4007-2)  
Sonny Sitt (Muse MCD-5429)  
Liz Story (Windham Hill 11115-2)  
Grady Tate (Milestone MCD-9208-2)  
Art Tatum (alone)(Pablo PACD-2405-434-2, 7PCAD-4404-2)  
Art Tatum w. Ben Webster (Pablo PACD-2405-431-2; 6PACD-4401-2)  
Billy Taylor (Taylor Made T-1002)  
Tommy Tedesco (Discovery 74007-2)(Discovery 70928-2)  
Cal Tjader (Fantasy OJCCD-642-2)  
Lenuce Tristano (Rhino R2-71595)  
Richard Twardzik (New Artists NA-1006CD)  
McCoy Tyner (alone)(Blue Note B2-96429)  
Sarah Vaughan (Mercury 826 327-2, Verve 314-526-464-2, 314-518-199-2, 314-523-827-2)  
Sarah Vaughan/Count Basie BB (Pablo PACD-2312-130)  
Gerry Wiggins (alone)(Concord CCD-4450)  
Joe Williams (Delos DE-4004)  
Larry Williams/Don Scarlatta Trio (Cexton CR-PI-0001)  
Mike Wofford Trio (Discovery 75000-2)  
Phil Woods (Philology W-69-2)  
Deny Zeitlin (Windham Hill WD-0112)

## Confirmation (1946)

Music by Charlie Parker. First recording by Dizzy Gillespie's Tempo Jazzmen.

Gene Ammons (Prestige OJCCD-297-2)  
Bob Badgley & Friends (Sea Breeze CDSWB-3014)  
Art Blakey w. Brown, Silver (Blue Note B2-46520)  
Hersch Bullen (Night Life CDNL-3012)  
Richie Cole/Hank Crawford Quartet (Milestone MCD-9180-2)  
Bob Cooper (Contemporary OJCCD-161-2)  
Chuck Corea (Corea not present; Michael Brecker/Steve Gadd duet)(Stretch STD-1103)  
Larry Coryell (Muse MCD-5303)  
Miles Davis (Fresh Sound FSCD 1000)  
Jim DeJulio (Paula PCD-9009)  
Lou Donaldson (Timeless CD SJP 153)  
Kenny Dorham (Xanadu FDC 5164)  
Tommy Flanagan (Enja 4014-2)  
Tommy Flanagan/Hank Jones (Galaxy OJCCD-752-2)  
Mike Garson/Los Gatos (CGR CGD 1801)  
Dizzy Gillespie (Spotlite LP SPJ 132\*OP)(Telarc CD-83307)  
Dexter Gordon (Fresh Sound FSR-CD 154)  
Barry Harris/Kenny Barron Quartet (Candid CCD 79519)  
Chiz Harris Quartet (Cexton CR-4321)  
Chris Hunter (Paddlewheel K32Y 626)  
Kevin Mahogany (Enja ENJ-7097-2)  
Manhattan Jazz Quintet (Paddle Wheel 240E 6805)  
Steve Marcus (Red Baron JK 53751)  
Jackie McLean (Prestige OJCCD-056-2)  
Modern Jazz Quartet (Atlantic 81976)  
Phineas Newborn (solo piano)(L&R CDLR 45020)  
Phineas Newborn Quartet (Steeplechase SCCD 36026)  
Charlie Parker (Debut OJCCD-041-2)(Verve 825 671-2; 833 288-2; 314-517-173-2; 837 141-2; 314-519-827-2)  
Bud Powell (Verve 314 521 669-2)(Steeplechase SCCD 30007/9)  
Red Rodney Quintet (Chesky JD 79)  
Hilton Ruiz (Stash ST-CD-19)  
George Shearing Quintet (GNP Crescendo GNPD-9055; Mosaic MD5-157)

George Shearing/Hank Jones (Concord CCD-4371)  
Archie Shepp (JTM JAM-CD-0005)  
Archie Shepp/Chet Baker (L&R LR 45006)  
Archie Shepp/Niels Henning Ørsted Pedersen Duo (Steeplechase SCCD 31149)  
Jimmy Smith (Blue Note B2-46097)  
Sonny Stitt (Rhino R2 01418-2, Rhino R2-71256)  
Supersax (Columbia CK 44436)  
29th St. Saxophone Quartet (Antilles 314 510 941-2)  
Phil Woods/Chris Swansen (Rykodisc RCD-10007)

## **Giant Steps (1959)**

Music by John Coltrane.

Jennifer Batten (Guitar 88561-5012-2)  
Mark Bingham (Sky 7-5091-CD)  
Luis Bonilla Latin Jazz All Stars (Candid CCD-79507)  
John Coltrane (\*Atlantic SD-1311-2; SD-1541-2, Mobile Fidelity UDCCD-605; Rhino R2 71255; R2 71256)  
(Verve 314 521 007)  
Kenny Drew Jr. (Antilles 314 514 211-2)  
Paquito D'Rivera/James Moody (Candid CCD-79523)  
Clare Fischer (Discovery 70934-2; 74003-2)  
Hal Galper (Concord CCD-4383)  
Terry Gibbs/Buddy DeFranco (Contemporary CCD-14036-2)  
Stephane Grappelli/McCoy Tyner (Tyner feat.) (Who's Who in Jazz CD-21047)  
Eddie Harris (Rhino R2 71514)  
Woody Herman BB (Fantasy OJCCD-344-2)  
David Kikoski (Epicure EK 64441)  
Lee Konitz (Musicmasters CIJD 60167M)  
Mark Masters Jazz Orchestra (Capri 74031-2)  
Bob Mintzer/Michael Brecker (RCA Novus 63173-2)  
New York Voices (Eldridge/Nazarian lyric)(GRP GRD-9653)  
Byron Olson/Music Amici Chamber Group (Angel CDC-54893)  
Rob Parton's Jazztech Big Band (Sea Breeze CDSB-2047)  
Joe Pass (Pablo PACD 2310-788-2)  
Tito Puente (Concord CCD-4250)  
Buddy Rich (World Wide Jazz CD-21006)  
Wallace Roney (Muse MCD-5372)  
Gonzalo Rubalcaba (Blue Note/Somethin' Else B2-97197)(Blue Note/Somethin' Else B2-99492)  
Vanessa Rubin (Neals lyric)(RCA Novus 63127-2)  
Arturo Sandoval (GRP GRD-9701)  
Vladimir Shafranov (Jazz Alliance TJA-10018)  
Aki Takase (Enja 6062-2)  
Toots Thielemans (Private Music 82120-2)  
Sumi Tomooka (Candid CCD-79516)  
McCoy Tyner (Enja ENJ-CD-6080)  
Bobby Watson (Red Record 123 250-2)  
World Saxophone Quartet (Black Saint 120 127-2)

## **Stella By Starlight (1946)**

Music by Victor Young, words by Ned Washington. Theme from the film *The Uninvited* (1944). First recording by Victor Young & His Orchestra.

John Abercrombie/Johnson/Erskine (ECM 1390/21390)  
Cannonball Adderley (Capitol/Curb D2-77399)  
Nat Adderley Quintet (Enja 7027-2)  
Nat Adderley/Don Scarlatta Trio (Cexton CR-PI-0001)  
Howard Alden/George Van Eps (Concord CCD-4584)  
Monty Alexander Quintet w. Molineaux (Concord Picante CCD-4124)  
Gene Ammons All-Stars (Prestige OJCCD-244-2)  
Tuck Andress (alone)(Windham Hill WD-0124)  
Dorothy Ashby (Savoy SV-0194)  
Chet Baker BB (Pacific Jazz B2-81201; B2-97161)  
Chet Baker (Accord 139229)(FOUR FS-40076)  
Tony Bennett (Columbia CGK 40424, C4K 46843)  
Art Blakey (Columbia CK 47118)  
Igor Brił Quartet (Mobile Fidelity MFCD-21-861)  
Paul Cacia (HHM HH6001-2)  
Ron Carter w. Hancock, Williams (Milestone OJCCD-754-2, OJCCD-6010-2)  
Al Cohn/Scott Hamilton/Buddy Tate (Concord CCD-4172)  
Concord All-Stars (Concord CCD-4347)  
Chuck Corea (alone)(GRP GRD-9774)  
Chuck Corea et al (jam)(Blue Note B2-89280)  
Larry Coryell (CTI 67236-2)  
Johnny Costa (Chiaroscuro CRD 205)  
Stanley Cowell (alone)(Concord CCD-4431)  
Bill Cunliffe (Discovery 77007-2)  
Miles Davis (Columbia CK 47835)(Columbia C2K 48821)(Columbia CK 40645)  
Kenny Dorham (Black Lion BLD-760119)  
Neal Ely Quintet (Nee NEE-CD-1001)  
Bill Evans Trio (Riverside OJCCD-263-2; RCD-018-2)(Milestone MCD-9151-2)  
Bill Evans (triple overdub)(Verve 821 984-2)  
Tal Farlow (Concord CCD-4154)(Verve 314-527-365-2)

Eric Felten/Jimmy Knepper (Soul Note 121 196-2)  
Maynard Ferguson BB (Mosaic MD10-156)  
Manfredo Fest (DMP CD-470)  
Ella Fitzgerald (Verve 835 646-2)  
Tommy Flanagan/Kenny Barron (Denon DC-8573)  
Bob Florence Limited Edition (USA USACD-589)  
Nnenna Freelon (Columbia CK 48981)  
Red Garland Galaxy (OJCCD-647-2)  
Red Garland Trio/Eddie Lockjaw Davis (Prestige OJCCD-360-2)  
Stan Getz (Polydor 838 769-2)(Verve 314-511-468-2; 833 535-2)  
Terry Gibbs/Buddy DeFranco (Contemporary CCD-14036-2)  
Dizzy Gillespie (Accord ACD139217)(Verve 314-513-875-2)  
Stephane Grappelli (Verve 314-517-392-2)  
Hampton Hawes (Contemporary OJCCD-318-2)  
Joe Henderson (Blue Note B2-28879)  
Toninho Horta (Verve 314-513-561-2)  
Irakere (Jazz House JHCD 005)  
Milt Jackson Sextet (Riverside OJCCD-260-2)  
Keith Jarrett/Gary Peacock/Jack DeJohnette (ECM21317-2)  
JJ Johnson (GRP GRD-145)  
Richie Kamuca (HiFi OJCCD-1760-2)  
Stan Kenton (Mosaic MD4-136)  
Tom Kubis (Cexton CR-21251-D)  
Steve Kuhn Trio (Concord CCD-4446)  
Bireli Lagrene (Blue Note B2-80251)  
Dave Liebman (Candid CCD79512)  
Gloria Lynne (Collectables COL-5138)  
Charlie Mariano (Prestige OJCCD-1745-2)  
Bill Mays/Ray Drummond (DMP CD-473)  
Rob McConnell BB (Concord CCD-4618)  
Dave McKenna (Concord CCD-4580)  
Charles Mingus Group (Debut OJCCD-1821-2)  
Phineas Newborn, Jr. (Contemporary OJCCD-662-2)  
Walter Norris (Concord CCD-4486)  
Anita O'Day (Verve 829 577-2)  
Charlie Parker (Verve 837 141-2)  
Joe Pass (Pablo PACD-2310-708-2)  
Oscar Peterson (Verve 818 844-2)  
Bud Powell (Blue Note B2-30083)(Roulette B2-93902)  
Tito Puente (Concord CCD-4250)  
Jimmy Raney (Xanadu FDC 5157)  
Red Rodney (Savoy SV-0148)  
Charlie Rouse (Epic EK 46181)  
Lew Soloff (Evidence ECD-22005)(Pro Arte CDJ-656)  
Christoph Spendel (Blue Flame CD-4007-2)  
Tommy Tedesco (Discovery 74007-2)(Discovery 70928-2)  
Nino Tempo (Atlantic 82471-2)  
McCoy Tyner (Milestone MCD-55003-2)  
Cedar Walton (alone)(Concord CCD-4546)  
Grover Washington, Jr. (Columbia CK 44256)  
Sadao Watanabe (Elektra 60475-2)  
Chuck Wayne (Savoy SV-0189)  
Ben Webster (Discovery 70818-2)

## **It's You Or No One (1948)**

Music by Jule Styne, words by Sammy Cahn. Introduced by Doris Day in the film *Romance on the High Seas*.

Joe Albany/Warne Marsh (Riverside OJCCD-1749-2)  
Chet Baker (CBS Associated ZK 40804)  
Michael Carvin (Muse MCD-5370)  
Billy Childs (Windham Hill Jazz 10144-2)  
Earl Coleman (Prestige OJCCD-187-2)  
Kenny Drew (Riverside OJCCD-483-2)  
Mike Garson (Reference Recordings RR-53CD)  
Goodfellas (P. Harper/Herring/Scott)(Evidence 22077-2)  
Dexter Gordon (Blue Note B2-84077; B2-91139)(Columbia C2K 46824)  
Stephane Grappelli (Angel CDC-54918)  
Benue Green (trombonist)(Prestige OJCCD-1752-2)  
Hampton Hawes Trio (Savoy SV-0117)  
JJ Johnson (Blue Note CDP 7 81506 2)(Verve 314-514-454-2)  
Barney Kessel (Contemporary CCD-14044-2)  
Morgana King (Muse MCD-5493)  
Lee Konitz (Verve 821 553-2)  
Monica Lewis (DRG CDMRS-802)  
Harold Mabern (DIW/Columbia CK 48961)  
Marian McPartland (alone)(Concord CCD-4460)  
Pete Minger Quartet (Jazz Alliance TJA-10005)  
Phineas Newborn Quartet (Steeplechase SCCD-36026)  
Anita O'Day w. Jack Sheldon BB (Pablo PACD-2310-950-2)  
Max Roach (Riverside OJCCD-304-2)  
George Shearing (Concord CCD-4400)  
Gary Thomas w. Pat Metheny (JMT 314 514 000-2)  
Cal Tjader (Savoy ZDS 1207)  
McCoy Tyner Quartet (Milestone MCD-55007-2)  
Sarah Vaughan (Musicraft MVSCD-55)



# 1. Confirmation



♩ = 192

By Charlie Parker

Each key's chord progression is played once.

FA EØ A7+9 D- G7 C- F7

Bb7 A- D7 G7+4 G- C7 FA 3

EØ A7+9 D- G7 C- F7 Bb7

A- D7 G- C7 BRIDGE C- F7 3

BbΔ BbΔ Eb- Ab7

DbΔ G- C7 FA 3 EØ A7+9 D- G7

C- F7 Bb7 A- D7 G- C7 FA Δ

# 1. Confirmation

(Bass Clef)

By Charlie Parker

♩ = 192

Each key's chord progression is played once.

FA EØ A7+9 D- G7 C- F7

Bb7 A- D7 G7+4 G- C7 FA

EØ A7+9 D- G7 C- F7 Bb7

A- D7 G- C7 FA BRIDGE C- F7

BbΔ BbΔ Eb- Ab7

DbΔ G- C7 FA EØ A7+9 D- G7

C- F7 Bb7 A- D7 G- C7 FA



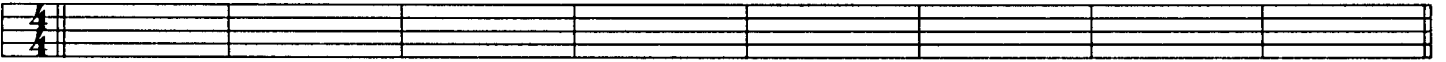
# 1. Confirmation - cont.



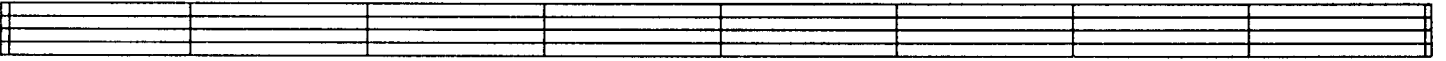
Each key's chord progression is played once.

1

FΔ EØ A7+9 D- G7 C- F7 Bb7 A- D7 G7 G- C7



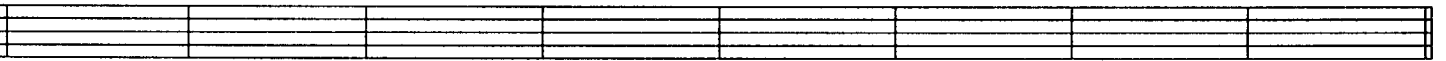
FΔ EØ A7+9 D- G7 C- F7 Bb7 A- D7 G- C7 FΔ



C- F7 BbΔ Eb- Ab7 DbΔ G- C7

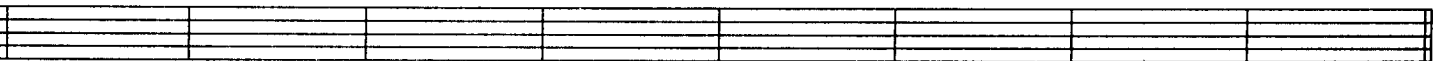


FΔ EØ A7+9 D- G7 C- F7 Bb7 A- D7 G- C7 FΔ C#7

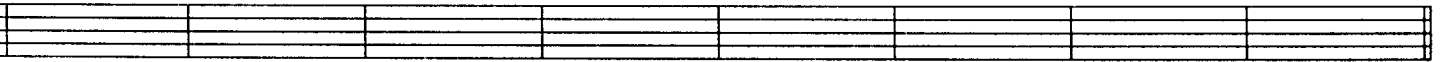


2

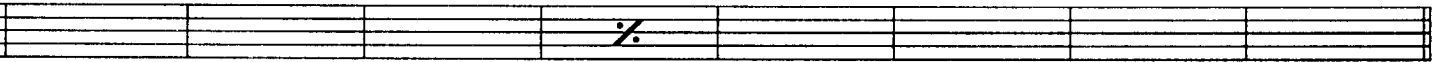
GbΔ FØ Bb7+9 Eb- Ab7 Db- Gb7 B7 Bb- Eb7 Ab7 Ab- Db7



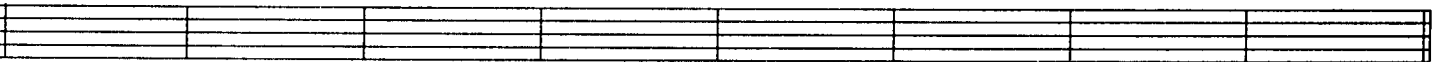
GbΔ FØ Bb7+9 Eb- Ab7 Db- Gb7 B7 Bb- Eb7 Ab- Db7 GbΔ



Db- Gb7 BΔ E- A7 DΔ Ab- Db7

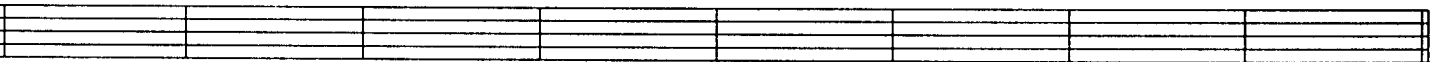


GbΔ FØ Bb7+9 Eb- Ab7 Db- Gb7 B7 Bb- Eb7 Ab- Db7 GbΔ D7

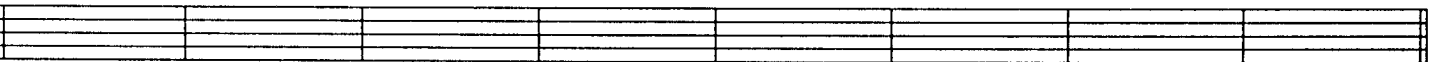


3

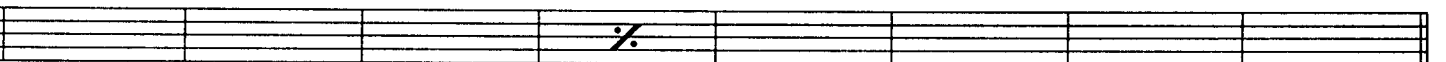
GΔ F#Ø B7+9 E- A7 D- G7 C7 B- E7 A7 A- D7



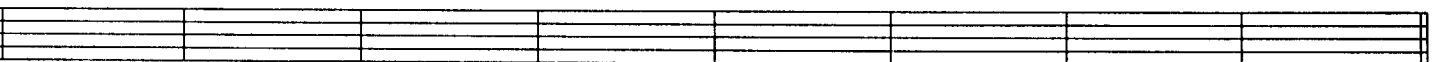
GΔ F#Ø B7+9 E- A7 D- G7 C7 B- E7 A- D7 GΔ



D- G7 CΔ F- Bb7 EbΔ A- D7



GΔ F#Ø B7+9 E- A7 D- G7 C7 B- E7 A- D7 GΔ Eb7





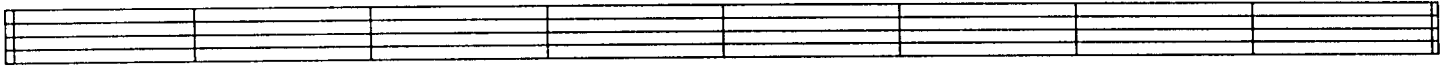


# 1. Confirmation - cont.

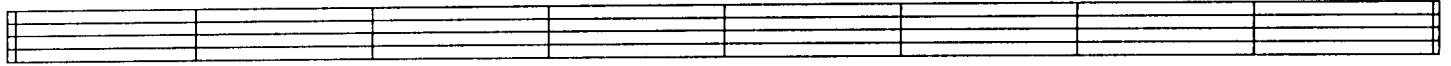


4

AbΔ GØ C7+9 F- Bb7 Eb- Ab7 Db7 C- F7 Bb7 Bb- Eb7



AbΔ GØ C7+9 F- Bb7 Eb- Ab7 Db7 C- F7 Bb- Eb7 AbΔ



Eb- Ab7 DbΔ F#- B7 EΔ Bb- Eb7

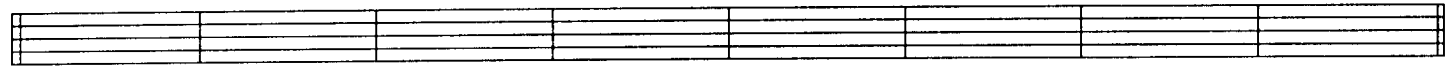


AbΔ GØ C7+9 F- Bb7 Eb- Ab7 Db7 C- F7 Bb- Eb7 AbΔ E7

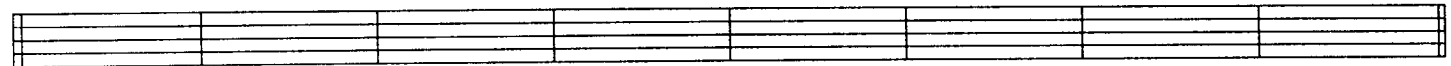


5

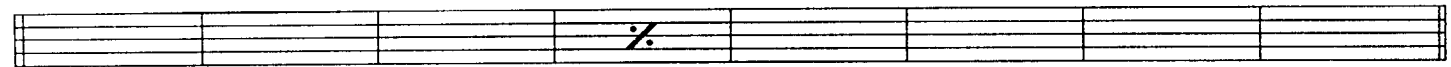
AΔ AbØ Db7+9 F#- B7 E- A7 D7 C#- F#7 B7 B- E7



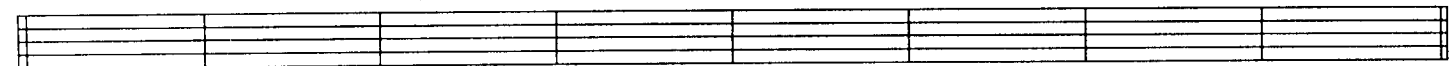
AΔ AbØ Db7+9 F#- B7 E- A7 D7 C#- F#7 B- E7 AΔ



E- A7 DΔ G- C7 FΔ B- E7

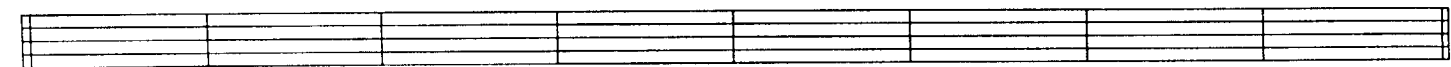


AΔ AbØ Db7+9 F#- B7 E- A7 D7 C#- F#7 B- E7 AΔ F7

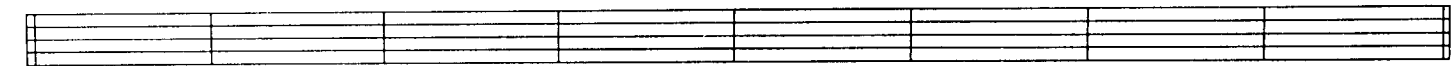


6

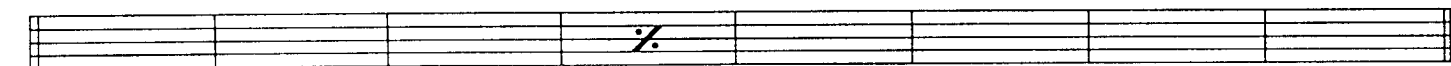
BbΔ AØ D7+9 G- C7 F- Bb7 Eb7 D- G7 C7 C- F7



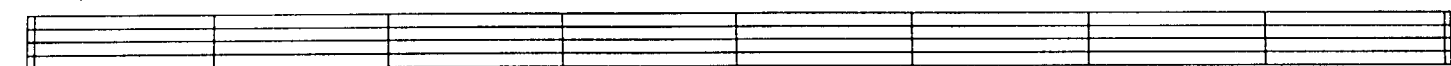
BbΔ AØ D7+9 G- C7 F- Bb7 Eb7 D- G7 C- F7 BbΔ



F- Bb7 EbΔ Ab- Db7 GbΔ C- F7



BbΔ AØ D7+9 G- C7 F- Bb7 Eb7 D- G7 C- F7 BbΔ F#7





# 1. Confirmation - cont.



7

BA BbØ Eb7+9 Ab- Db7 F#- B7 E7 Eb- Ab7 Db7 Db- Gb7

BA BbØ Eb7+9 Ab- Db7 F#- B7 E7 Eb- Ab7 Db- Gb7 BA

F#- B7 EA A- D7 GA Db- Gb7

BA BbØ Eb7+9 Ab- Db7 F#- B7 E7 Eb- Ab7 Db- Gb7 BA G7

8

CA BØ E7+9 A- D7 G- C7 F7 E- A7 D7 D- G7

CA BØ E7+9 A- D7 G- C7 F7 E- A7 D- G7 CA

G- C7 FA Bb- Eb7 AbΔ D- G7

CA BØ E7+9 A- D7 G- C7 F7 E- A7 D- G7 CA Ab7

9

DbΔ CØ F7+9 Bb- Eb7 Ab- Db7 Gb7 F- Bb7 Eb7 Eb- Ab7

DbΔ CØ F7+9 Bb- Eb7 Ab- Db7 Gb7 F- Bb7 Eb- Ab7 DbΔ

Ab- Db7 GbΔ B- E7 AΔ Eb- Ab7

DbΔ CØ F7+9 Bb- Eb7 Ab- Db7 Gb7 F- Bb7 Eb- Ab7 DbΔ A7

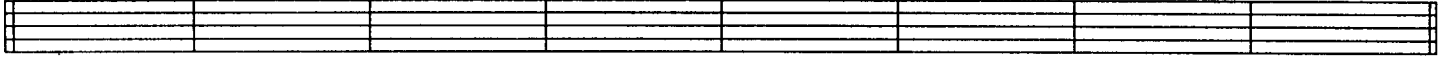


# 1. Confirmation - cont.

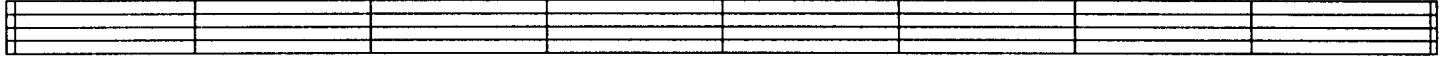


10

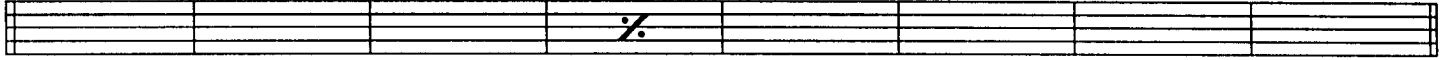
DA C#Ø F#7+9 B- E7 A- D7 G7 F#- B7 E7 E- A7



DA C#Ø F#7+9 B- E7 A- D7 G7 F#- B7 E- A7 DA



A- D7 GA C- F7 BbΔ E- A7

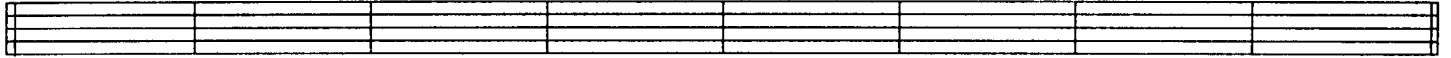


DA C#Ø F#7+9 B- E7 A- D7 G7 F#- B7 E- A7 DA Bb7

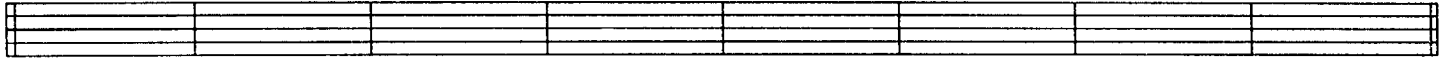


11

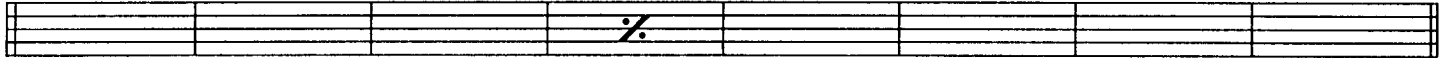
EbΔ DØ G7+9 C- F7 Bb- Eb7 Ab7 G- C7 F7 F- Bb7



EbΔ DØ G7+9 C- F7 Bb- Eb7 Ab7 G- C7 F- Bb7 EbΔ



Bb- Eb7 AbΔ Db- Gb7 BΔ F- Bb7



EbΔ DØ G7+9 C- F7 Bb- Eb7 Ab7 G- C7 F- Bb7 EbΔ B7

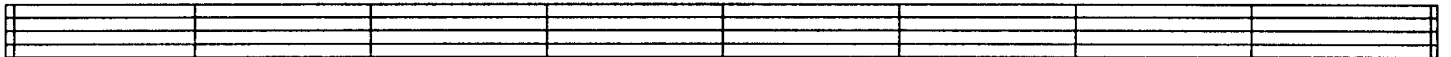


12

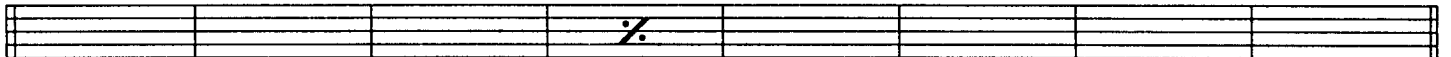
EA EbØ Ab7+9 Db- Gb7 B- E7 A7 Ab- Db7 Gb7 F#- B7



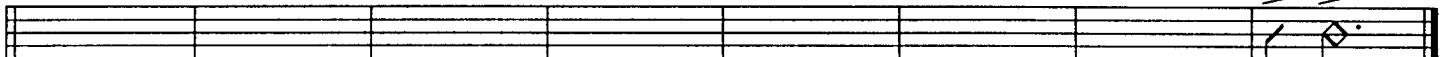
EA EbØ Ab7+9 Db- Gb7 B- E7 A7 Ab- Db7 F#- B7 EA



B- E7 AΔ D- G7 CΔ F#- B7



EA EbØ Ab7+9 C#- F#7 B- E7 A7 Ab- Db7 F#- B7 EA





# 2. Stella By Starlight



♩ = 132 Each key's chord progression is played once.

By Ned Washington  
and Victor Young

E $\emptyset$  A7+9 C- F7 F- B $\flat$ 7 E $\flat$  $\Delta$  A $\flat$ 7+4

B $\flat$  $\Delta$  E $\emptyset$  A7+9 D- B $\flat$ - E $\flat$ 7 F $\Delta$  G- C7 <sub>3</sub> A $\emptyset$  D7+9

G7+9 G7+9 C- C- A $\flat$ 7+4 B $\flat$  $\Delta$

E $\emptyset$  A7+9 D $\emptyset$  G7+9 C $\emptyset$  F7 $\flat$ 9 B $\flat$  $\Delta$



# 2. Stella By Starlight



(Bass Clef)

E $\emptyset$  A7+9 C- F7 F- B $\flat$ 7 E $\flat$  $\Delta$  A $\flat$ 7+4

B $\flat$  $\Delta$  E $\emptyset$  A7+9 D- B $\flat$ - E $\flat$ 7 F $\Delta$  G- C7 <sub>3</sub> A $\emptyset$  D7+9

G7+9 G7+9 C- C- A $\flat$ 7+4 B $\flat$  $\Delta$

E $\emptyset$  A7+9 D $\emptyset$  G7+9 C $\emptyset$  F7 $\flat$ 9 B $\flat$  $\Delta$

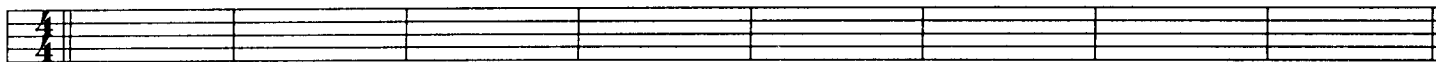


## 2. Stella By Starlight - cont.

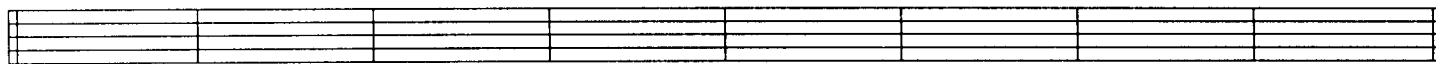


Each key's chord progression is played once.

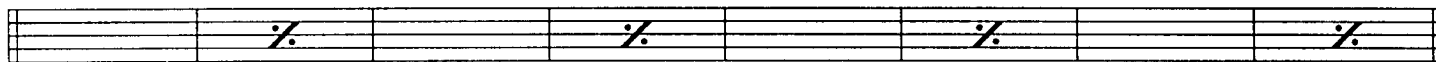
**1** EØ A7+9 C- F7 F- Bb7 EbΔ Ab7+4



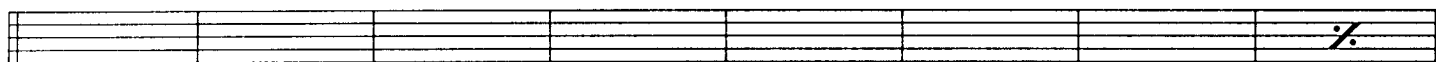
BbΔ EØ A7+9 D- Bb- Eb7 FΔ G- C7 AØ D7+9



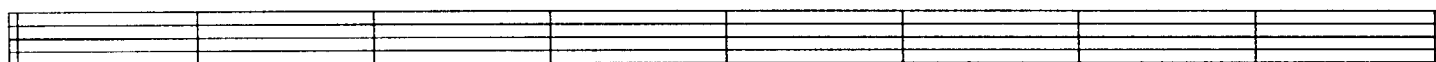
G7+9 C- Ab7+4 BbΔ



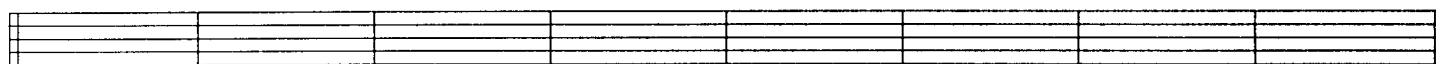
EØ A7+9 Eb- Ab7 D- G7 C#- F#7 C- F7 BbΔ



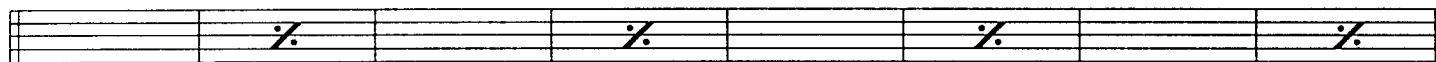
**2** FØ Bb7+9 Db- Gb7 Gb- B7 EΔ A7+4



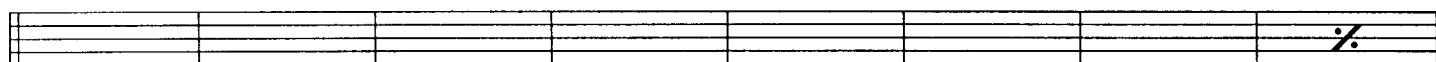
BA FØ Bb7+9 Eb- B- E7 GbΔ Ab- Db7 BbØ Eb7+9



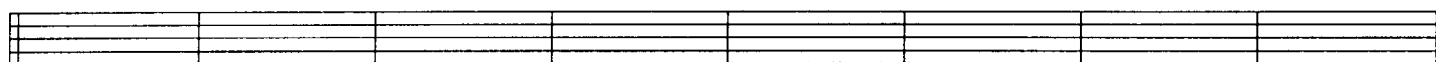
Ab7+9 Db- A7+4 BΔ



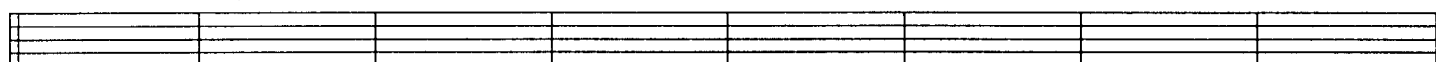
FØ Bb7+9 E- A7 Eb- Ab7 D- G7 Db- Gb7 BA



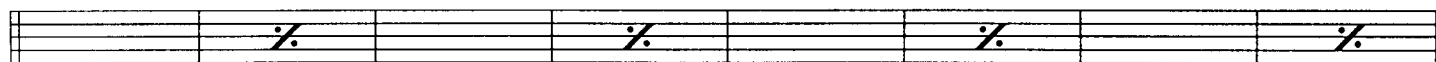
**3** F#Ø B7+9 D- G7 G- C7 FΔ Bb7+4



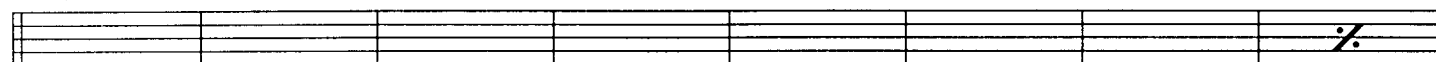
CA F#Ø B7+9 E- C- F7 GΔ A- D7 BØ E7+9



A7+9 D- Bb7+4 CA



F#Ø B7+9 F- Bb7 E- A7 Eb- Ab7 D- G7 CA





# 2. Stella By Starlight - cont.



4

GØ C7+9 Eb- Ab7 Ab- Db7 GbΔ B7+4

DbΔ GØ C7+9 F- Db- Gb7 AbΔ Bb- Eb7 CØ F7+9

Bb7+9 Eb- B7+4 DbΔ

GØ C7+9 F#- B7 F- Bb7 E- A7 Eb- Ab7 DbΔ

5

AbØ Db7+9 E- A7 A- D7 GΔ C7+4

DΔ AbØ Db7+9 F#- D- G7 AΔ B- E7 C#Ø F#7+9

B7+9 E- C7+4 DΔ

AbØ Db7+9 G- C7 F#- B7 F- Bb7 E- A7 DΔ

6

AØ D7+9 F- Bb7 Bb- Eb7 AbΔ Db7+4

EbΔ AØ D7+9 G- Eb- Ab7 BbΔ C- F7 DØ G7+9

C7+9 F- Db7+4 EbΔ

AØ D7+9 Ab- Db7 G- C7 F#- B7 F- Bb7 EbΔ

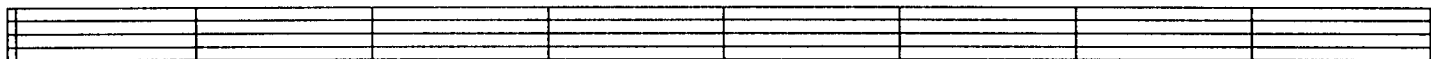


## 2. Stella By Starlight - cont.

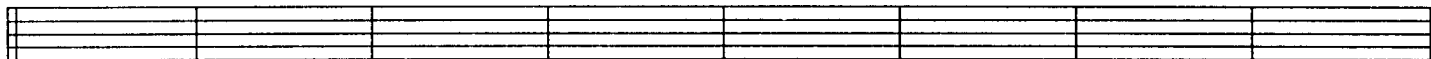


7

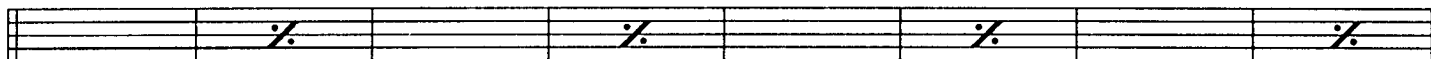
BbØ Eb7+9 Gb- B7 B- E7 AA D7+4



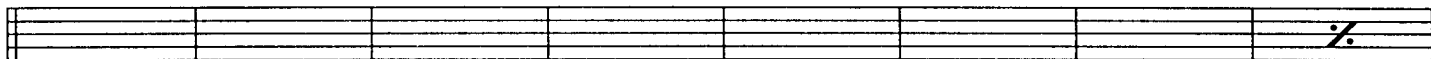
EΔ BbØ Eb7+9 Ab- E- A7 BΔ Db- Gb7 EbØ Ab7+9



Db7+9 Gb- D7+4 EΔ

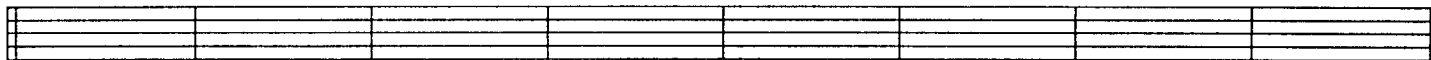


BbØ Eb7+9 A- D7 Ab- Db7 G- C7 F#- B7 EΔ

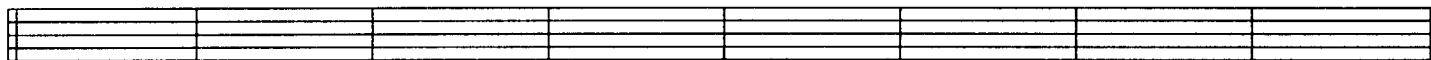


8

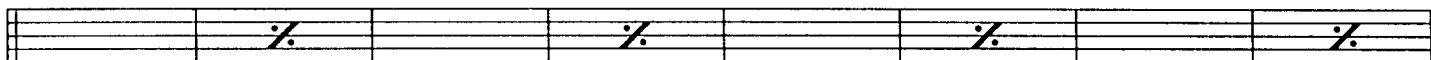
BØ E7+9 G- C7 C- F7 BbΔ Eb7+4



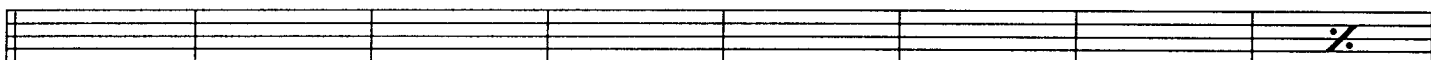
FΔ BØ E7+9 A- F- Bb7 CΔ D- G7 EØ A7+9



D7+9 G- Eb7+4 FΔ

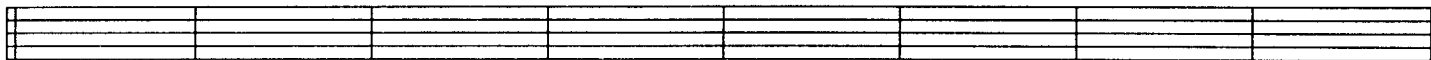


BØ E7+9 Bb- Eb7 A- D7 Ab- Db7 G- C7 FΔ

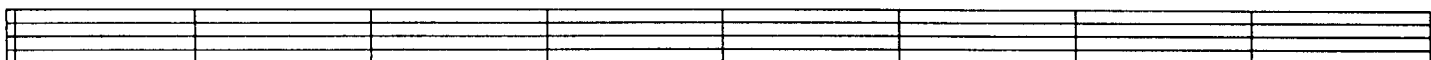


9

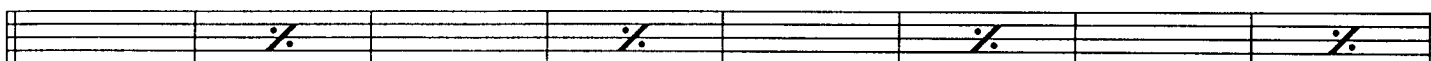
CØ F7+9 Ab- Db7 Db- Gb7 BΔ E7+4



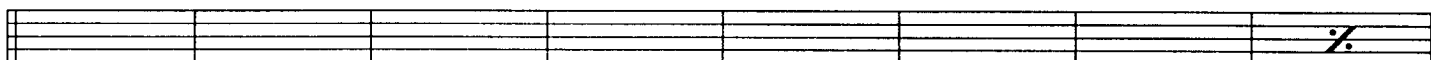
GbΔ CØ F7+9 Bb- F#- B7 DbΔ Eb- Ab7 FØ Bb7+9



Eb7+9 Ab- E7+4 GbΔ



CØ F7+9 B- E7 Bb- Eb7 A- D7 Ab- Db7 GbΔ





# 2. Stella By Starlight - cont.



10

C#0 F#7+9 A- D7 D- G7 CΔ F7+4

GΔ C#0 F#7+9 B- G- C7 DΔ E- A7 F#0 B7+9

E7+9 A- F7+4 GΔ

C#0 F#7+9 C- F7 B- E7 Bb- Eb7 A- D7 GΔ

11

D0 G7+9 Bb- Eb7 Eb- Ab7 DbΔ Gb7+4

AbΔ D0 G7+9 C- Ab- Db7 EbΔ F- Bb7 G0 C7+9

F7+9 Bb- Gb7+4 AbΔ

D0 G7+9 Db- Gb7 C- F7 B- E7 Bb- Eb7 AbΔ

12

Eb0 Ab7+9 B- E7 E- A7 DΔ G7+4

AΔ Eb0 Ab7+9 Db- A- D7 EΔ F#- B7 Ab0 Db7+9

Gb7+9 B- G7+4 AΔ Eb0 Ab7+9

D- G7 Db- Gb7 C- F7 B- E7 AΔ B-/E AΔ B-/E AΔ B-/E AΔ

(LATIN)

Fine





# 3. It's You Or No One



♩ = 232

By Sammy Cahn  
and Jule Styne

NOTE: Each Key Is Played TWICE!

G- C7 FA D7 G- C7

FA Bb- Eb7 AbΔ G7+9 CA

D- G7 CA A- D7+9 G- C7 FA D7

G- C7 C- F7 BbΔ Bb-

A- Ab- G- C7 FA



# 3. It's You Or No One



(Bass Clef)

G- C7 FA D7 G- C7

FA Bb- Eb7 AbΔ G7+9 CA

D- G7 CA A- D7+9 G- C7 FA D7

G- C7 C- F7 BbΔ Bb-

A- Ab- G- C7 FA



### 3. It's You Or No One - cont.



**1** G- C7 FΔ D7 G- C7 FΔ

Bb- Eb7 AbΔ G7+9 CΔ D- G7 CΔ A- D7

G- C7 FΔ D7 G- C7 C- F7

BbΔ Bb- A- Ab- Db7 G- C7 FΔ

1. D7	2. Eb7+9
----------	-------------

**2** Ab- Db7 GbΔ Eb7 Ab- Db7 GbΔ

B- E7 AΔ Ab7+9 DbΔ Eb- Ab7 DbΔ Bb- Eb7

Ab- Db7 GbΔ Eb7 Ab- Db7 Db- Gb7

BΔ B- Bb- A- D7 Ab- Db7 GbΔ

1. Eb7	2. E7+9
-----------	------------

**3** A- D7 GΔ E7 A- D7 GΔ

C- F7 BbΔ A7+9 DΔ E- A7 DΔ B- E7

A- D7 GΔ E7 A- D7 D- G7

CΔ C- B- Bb- Eb7 A- D7 GΔ

1. E7	2. F7+9
----------	------------

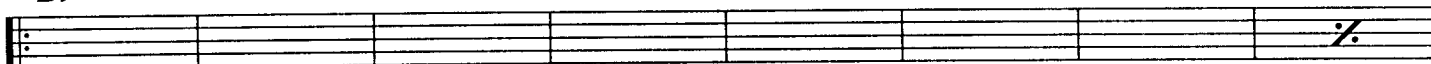


### 3. It's You Or No One - cont.

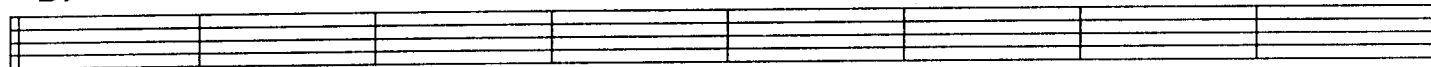


4

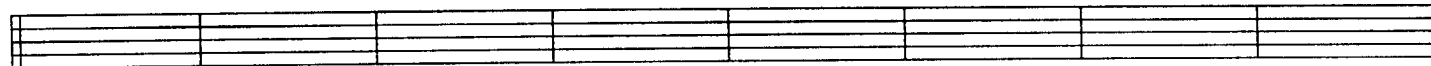
Bb- Eb7 AbΔ F7 Bb- Eb7 AbΔ



Db- Gb7 BΔ Bb7+9 EbΔ F- Bb7 EbΔ C- F7



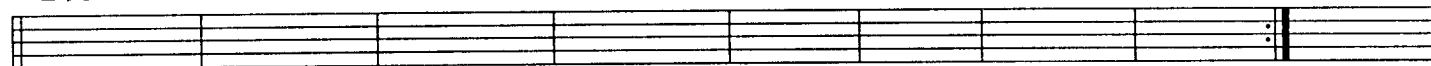
Bb- Eb7 AbΔ F7 Bb- Eb7 Eb- Ab7



DbΔ Db- C- B- E7 Bb- Eb7 AbΔ

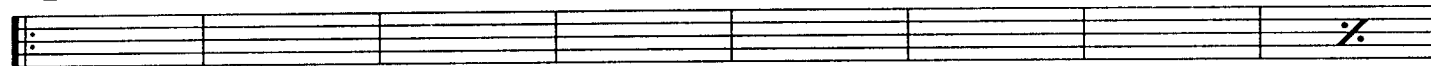
1.  
F7

2.  
Gb7+9

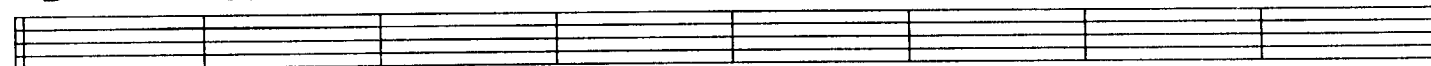


5

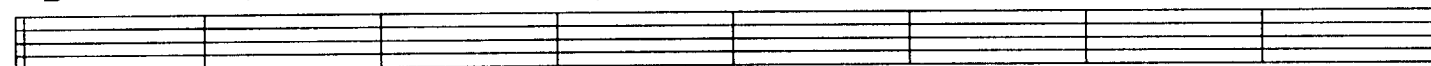
B- E7 AΔ F#7 B- E7 AΔ



D- G7 CΔ B7+9 EΔ F#- B7 EΔ C#- F#7



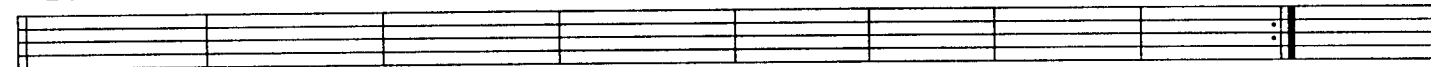
B- E7 AΔ F#7 B- E7 E- A7



DA D- C#- C- F7 B- E7 AΔ

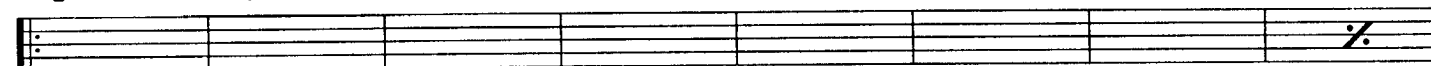
1.  
F#7

2.  
G7+9

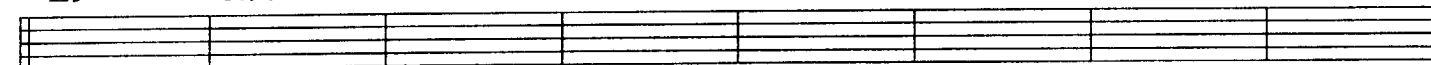


6

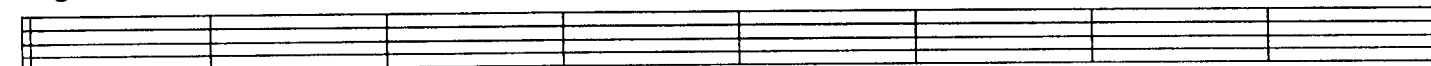
C- F7 BbΔ G7 C- F7 BbΔ



Eb- Ab7 DbΔ C7+9 FΔ G- C7 FΔ D- G7



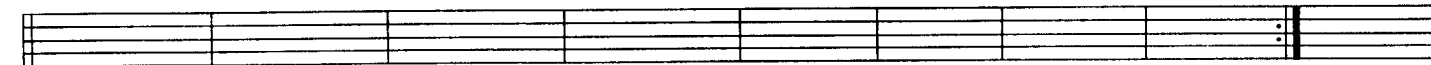
C- F7 BbΔ G7 C- F7 F- Bb7



EbΔ Eb- D- Db- Gb7 C- F7 BbΔ

1.  
G7

2.  
Ab7+9



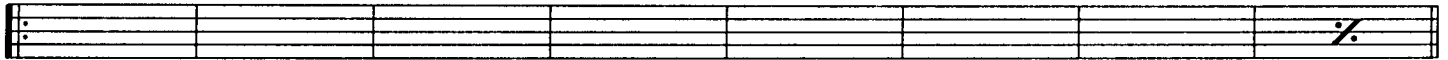


### 3. It's You Or No One - cont.

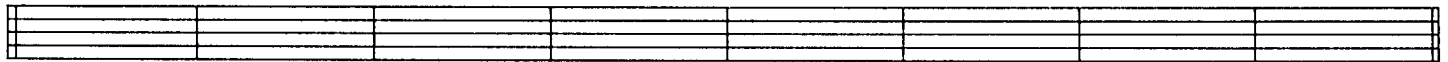


7

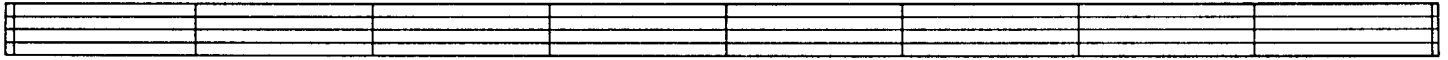
Db- Gb7 BΔ Ab7 Db- Gb7 BΔ



E- A7 DΔ Db7+9 GbΔ Ab- Db7 GbΔ Eb- Ab7

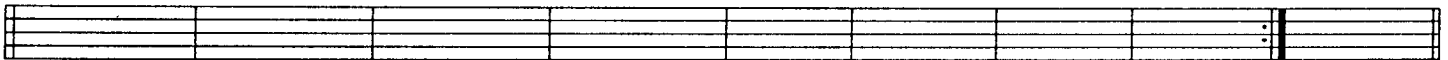


Db- Gb7 BΔ Ab7 Db- Gb7 Gb- B7



EA E- Eb- D- G7 Db- Gb7 BΔ

1. Ab7 2. A7+9

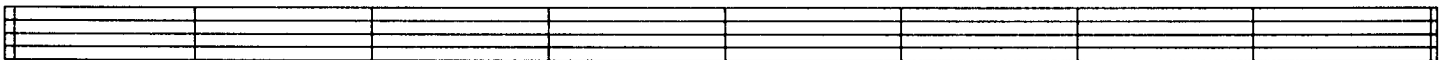


8

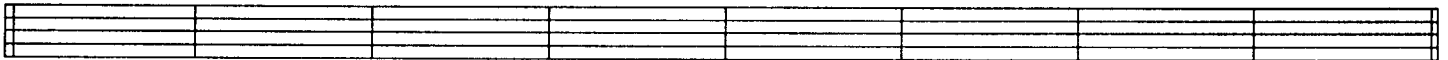
D- G7 CΔ A7 D- G7 CΔ



F- Bb7 EbΔ D7+9 GΔ A- D7 GΔ E- A7

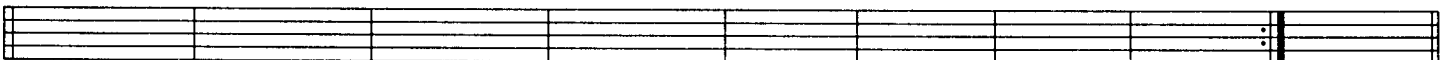


D- G7 CΔ A7 D- G7 G- C7



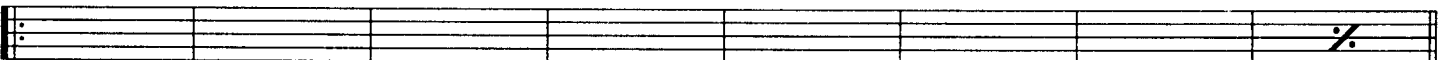
FΔ F- E- Eb- Ab7 D- G7 CΔ

1. A7 2. Bb7+9



9

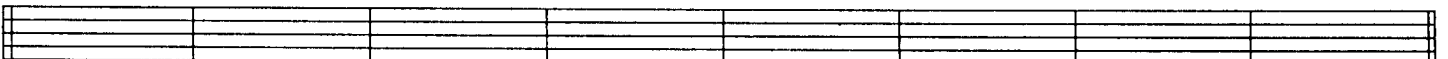
Eb- Ab7 DbΔ Bb7 Eb- Ab7 DbΔ



Gb- B7 EA Eb7+9 AbΔ Bb- Eb7 AbΔ F- Bb7

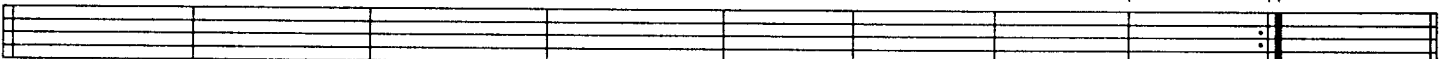


Eb- Ab7 DbΔ Bb7 Eb- Ab7 Ab- Db7



GbΔ Gb- F- E- A7 Eb- Ab7 DbΔ

1. Bb7 2. B7+9





### 3. It's You Or No One - cont.



10

E- A7 DΔ B7 E- A7 DΔ

G- C7 FΔ E7+9 AΔ B- E7 AΔ F#- B7

E- A7 DΔ B7 E- A7 A- D7

GΔ G- F#- F- Bb7 E- A7 DΔ

1. B7 2. C7+9

11

F- Bb7 EbΔ C7 F- Bb7 EbΔ

Ab- Db7 GbΔ F7+9 BbΔ C- F7 BbΔ G- C7

F- Bb7 EbΔ C7 F- Bb7 Bb- Eb7

AbΔ Ab- G- Gb- B7 F- Bb7 EbΔ

1. C7 2. Db7+9

12

F#- B7 EΔ Db7 F#- B7 EΔ

A- D7 GΔ F#7+9 BΔ C#- F#7 BΔ Ab- Db7

F#- B7 EΔ Db7 F#- B7 B- E7

AΔ A- Ab- G- C7 F#- B7

1. EΔ C#7 2. G-

C7 F#- B7 A- D7 GΔ

Fine



# 4. All The Things You Are



♩ = 200

Lyrics by Oscar Hammerstein II  
Music by Jerome Kern

Each key's chord progression is played once.

F- Bb- Eb7 AbΔ DbΔ D- G7

CA CA C- F- Bb7 EbΔ AbΔ A- D7

GA GA A- D7+9 GA GA F#-

B7+9 EA C7+ F- Bb- Eb7 AbΔ DbΔ

Db- Gb7 C- B- Bb- Eb7 AbΔ



# 4. All The Things You Are



(Bass Clef)

F- Bb- Eb7 AbΔ DbΔ D- G7

CA CA C- F- Bb7 EbΔ AbΔ A- D7

GA GA A- D7+9 GA GA F#-

B7+9 EA C7+ F- Bb- Eb7 AbΔ DbΔ

Db- Gb7 C- B- Bb- Eb7 AbΔ



# 4. All The Things You Are - cont.



Each key's chord progression is played once.

**1** F- Bb- Eb7 AbΔ DbΔ D- G7 CΔ

C- F- Bb7 EbΔ AbΔ A- D7 GΔ

A- D7 GΔ F#- B7 EA C7+9

F- Bb- Eb7 AbΔ DbΔ Db-

C- B- E7 Bb- Eb7 AbΔ Ab- Db7

**2** Gb- B- E7 AΔ DΔ Eb- Ab7 DbΔ

Db- Gb- B7 EA AΔ Bb- Eb7 AbΔ

Bb- Eb7 AbΔ G- C7 FΔ Db7+9

Gb- B- E7 AΔ DΔ D-

Db- C- F7 B- E7 AΔ A- D7

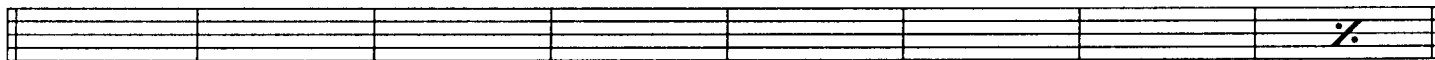


# 4. All The Things You Are - cont.

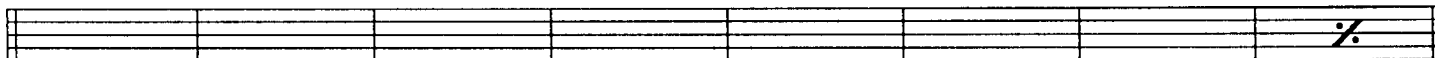


3

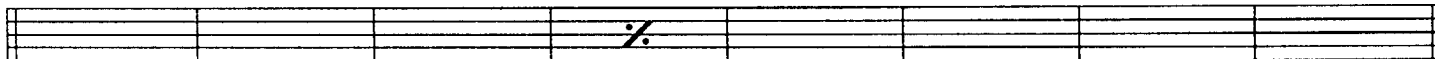
G- C- F7 BbΔ EbΔ E- A7 DΔ



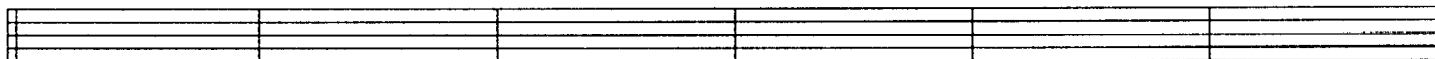
D- G- C7 FΔ BbΔ B- E7 AΔ



B- E7 AΔ Ab- Db7 GbΔ D7+9



G- C- F7 BbΔ EbΔ Eb-

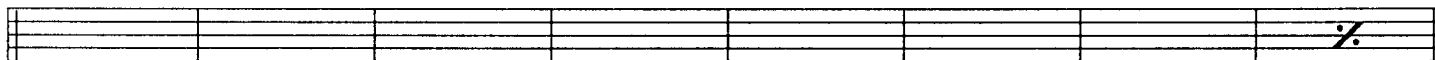


D- Db- Gb7 C- F7 BbΔ Bb- Eb7



4

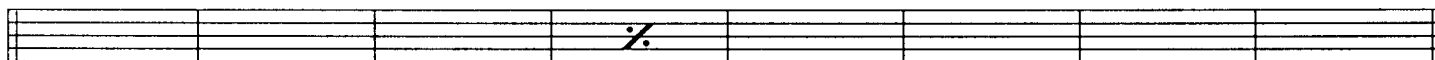
Ab- Db- Gb7 BΔ EΔ F- Bb7 EbΔ



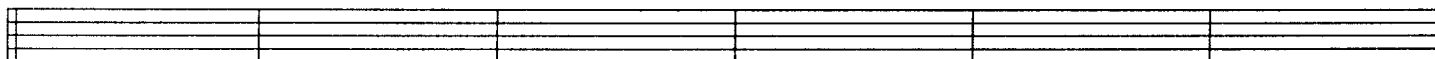
Eb- Ab- Db7 GbΔ BΔ C- F7 BbΔ



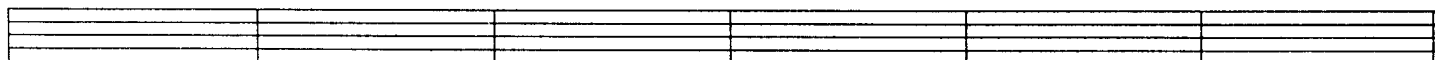
C- F7 BbΔ A- D7 GΔ Eb7+9



Ab- Db- Gb7 BΔ EΔ E-



Eb- D- G7 Db- Gb7 BΔ B- E7





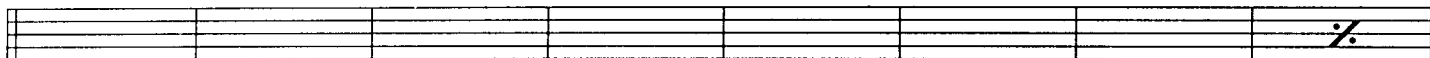


# 4. All The Things You Are - cont.

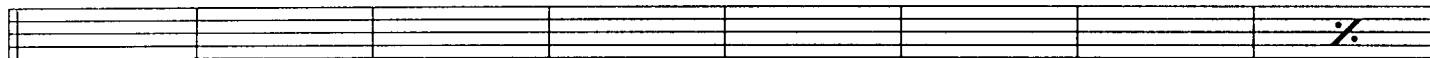


5

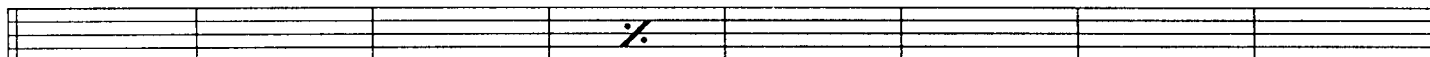
A- D- G7 CA FA F#- B7 EΔ



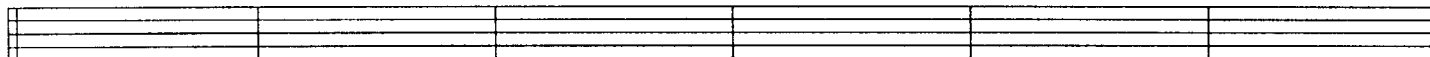
E- A- D7 GΔ CA C#- F#7 BΔ



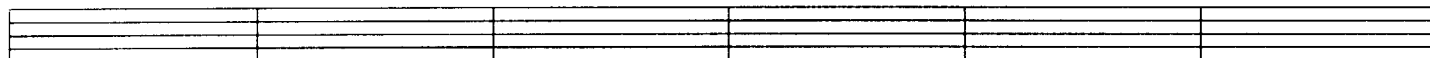
C#- F#7 BΔ Bb- Eb7 AbΔ E7+9



A- D- G7 CA FA F-

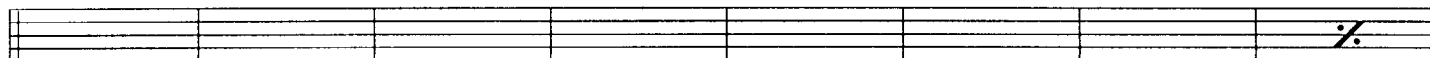


E- Eb- Ab7 D- G7 CA C- F7

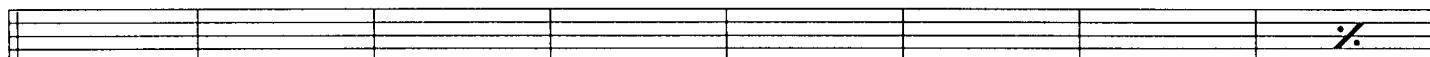


6

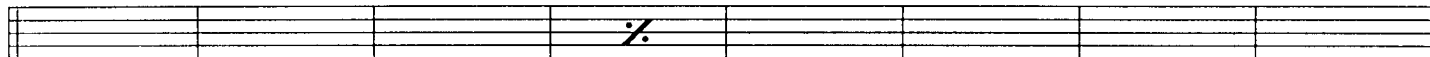
Bb- Eb- Ab7 DbΔ GbΔ G- C7 FA



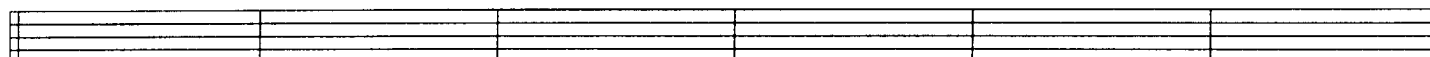
F- Bb- Eb7 AbΔ DbΔ D- G7 CA



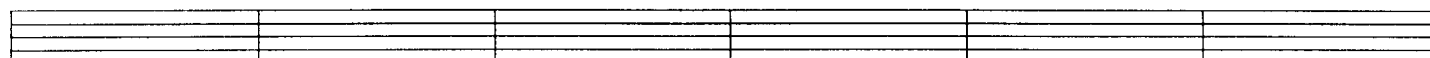
D- G7 CA B- E7 AΔ F7+9



Bb- Eb- Ab7 DbΔ GbΔ Gb-



F- E- A7 Eb- Ab7 DbΔ Db- Gb7



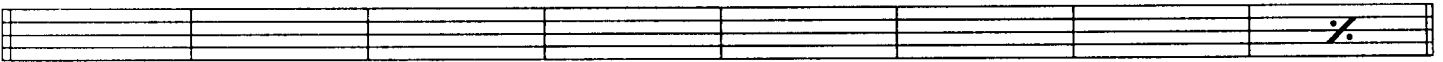


# 4. All The Things You Are - cont.

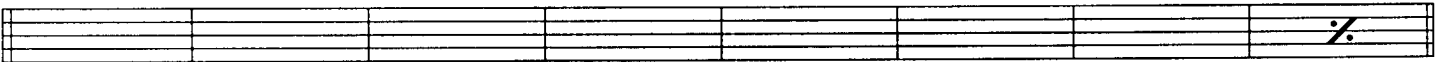


7

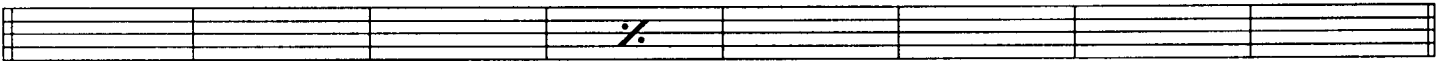
B- E- A7 DΔ GA Ab- Db7 GbΔ



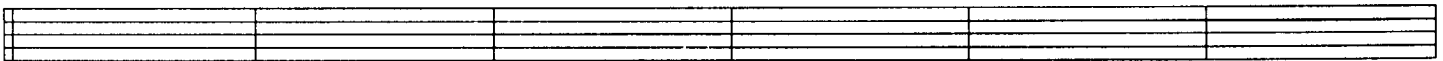
Gb- B- E7 AΔ DΔ Eb- Ab7 DbΔ



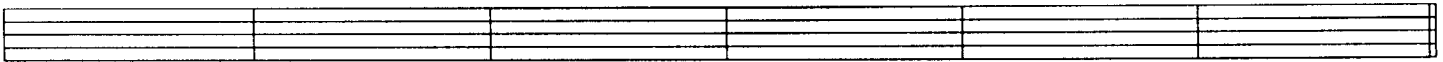
Eb- Ab7 DbΔ C- F7 BbΔ Gb7+9



B- E- A7 DΔ GA G-

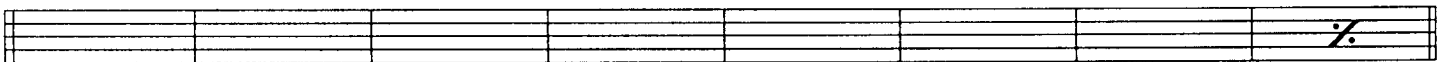


Gb- F- Bb7 E- A7 DΔ D- G7

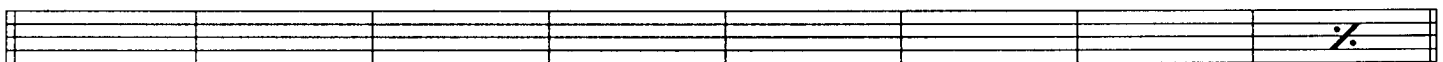


8

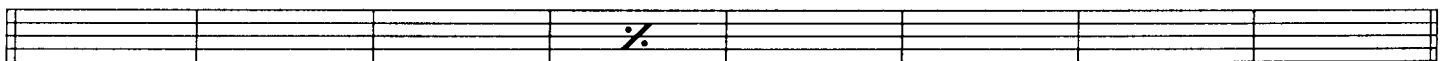
C- F- Bb7 EbΔ AbΔ A- D7 GA



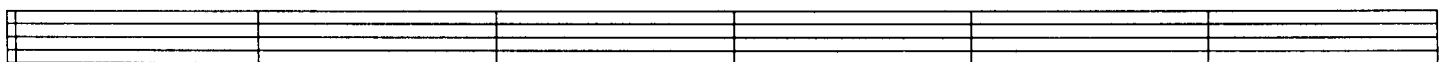
G- C- F7 BbΔ EbΔ E- A7 DΔ



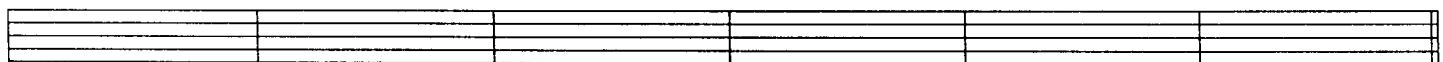
E- A7 DΔ C#- F#7 BΔ G7+9



C- F- Bb7 EbΔ AbΔ Ab-



G- F#- B7 F- Bb7 EbΔ Eb- Ab7





# 4. All The Things You Are - cont.



9

Db- Gb- B7 EΔ AΔ Bb- Eb7 AbΔ

Ab- Db- Gb7 BΔ EΔ F- Bb7 EbΔ

F- Bb7 EbΔ D- G7 CΔ Ab7+9

Db- Gb- B7 EΔ AΔ A-

Ab- G- C7 Gb- B7 EΔ E- A7

10

D- G- C7 FΔ BbΔ B- E7 AΔ

A- D- G7 CΔ FΔ F#- B7 EΔ

F#- B7 EΔ Eb- Ab7 DbΔ A7+9

D- G- C7 FΔ BbΔ Bb-

A- Ab- Db7 G- C7 FΔ F- Bb7



# 4. All The Things You Are - cont.



11

E $\flat$ -      A $\flat$ -      D $\flat$ 7      G $\flat$  $\Delta$       B $\Delta$       C- F7      B $\flat$  $\Delta$

B $\flat$ -      E $\flat$ -      A $\flat$ 7      D $\flat$  $\Delta$       G $\flat$  $\Delta$       G- C7      F $\Delta$

G-      C7      F $\Delta$       E-      A7      D $\Delta$       B $\flat$ 7+9

E $\flat$ -      A $\flat$ -      D $\flat$ 7      G $\flat$  $\Delta$       B $\Delta$       B-

B $\flat$ -      A-      D7      A $\flat$ -      D $\flat$ 7      G $\flat$  $\Delta$       G $\flat$ - B7

12

E-      A-      D7      G $\Delta$       C $\Delta$       C $\sharp$ - F $\sharp$ 7      B $\Delta$

B-      E-      A7      D $\Delta$       G $\Delta$       A $\flat$ - D $\flat$ 7      G $\flat$  $\Delta$

A $\flat$ -      D $\flat$ 7      G $\flat$  $\Delta$       F-      B $\flat$ 7      E $\flat$  $\Delta$       B7+9

E-      A-      D7      G $\Delta$       C $\Delta$       C-

B-      B $\flat$ -      E $\flat$ 7      A-      D7      B-      E7      A-      D7      G $\Delta$



# 5. This I Dig



♩ = 208 NOTE: Each Key's Chord Progression Is Played TWICE.

By Jamey Aebersold

**5. This I Dig (Treble Clef)**

Chord progression: BbΔ, C-, BbΔ, C- (repeated twice)

1. F-, BbΔ, EbΔ

2. F-, BbΔ, EbΔ, EØ, A7+9

Chord progression: D-, G7, Db-, Gb7 (repeated twice)

3. F-, BbΔ, EbΔ, EØ, A7+9

4. D-, G7b9, C-, F7b9, BbΔ

Annotations: pedal F --, No Pedal



# 5. This I Dig (Bass Clef)



**5. This I Dig (Bass Clef)**

Chord progression: BbΔ, C-, BbΔ, C- (repeated twice)

1. F-, Bb7, EbΔ

2. F-, Bb7, EbΔ, EØ, A7+9

Chord progression: D-, G7, Db-, Gb7 (repeated twice)

3. F-, Bb7, EbΔ, EØ, A7+9

4. D-, G7b9, C-, F7b9, BbΔ

Annotations: (Optional 8va) pedal F --, No Pedal



# 5. This I Dig - cont.



NOTE: Each Key Is Played TWICE. The Very Last Bar Of Each Key Leads To Next Key.

1

BbΔ C- BbΔ C- BbΔ C- BbΔ F- Bb7

pedal F (1st chorus only)

1.

EbΔ EØ A7+9 D- C#- F#7 C- F7

2.

EbΔ EØ A7+9 D- G7 C- F7 BbΔ

Play 1st chorus ONLY  
D.C.

Play 2nd chorus ONLY  
Leads to next key

C- F7

C#- F#7

2

BA C#- BA C#- BA C#- BA F#- B7

pedal F# (1st chorus only)

1.

EΔ FØ Bb7+9 Eb- D- G7 C#- F#7

2.

EΔ FØ Bb7+9 Eb- Ab7 C#- F#7 BA

Play 1st chorus ONLY  
D.C.

Play 2nd chorus ONLY  
Leads to next key

C#- F#7

D- G7

3

CA D- CA D- CA D- CA G- C7

pedal G (1st chorus only)

1.

FΔ F#Ø B7+9 E- Eb- Ab7 D- G7

2.

FΔ F#Ø B7+9 E- A7 D- G7 CA

Play 1st chorus ONLY  
D.C.

Play 2nd chorus ONLY  
Leads to next key

D- G7

Eb- Ab7

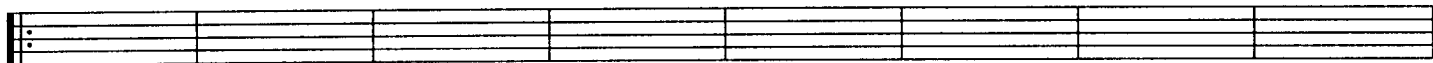


# 5. This I Dig - cont.



4

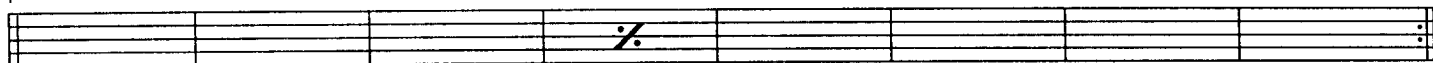
**DbΔ Eb- DbΔ Eb- DbΔ Eb- DbΔ Ab- Db7**



*pedal Ab (1st chorus only)*

1.

**GbΔ GØ C7+9 F- E- A7 Eb- Ab7**



2.

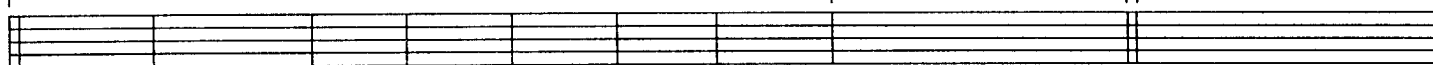
**GbΔ GØ C7+9 F- Bb7 Eb- Ab7 DbΔ**

**Play 1st chorus ONLY**  
D.C.

**Play 2nd chorus ONLY**  
Leads to next key

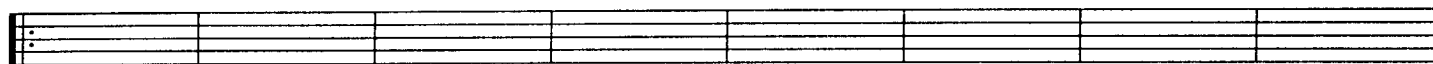
**Eb- Ab7**

**E- A7**



5

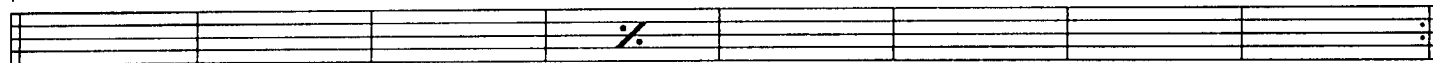
**DΔ E- DΔ E- DΔ E- DΔ A- D7**



*pedal A (1st chorus only)*

1.

**GΔ AbØ Db7+9 Gb- F- Bb7 E- A7**



2.

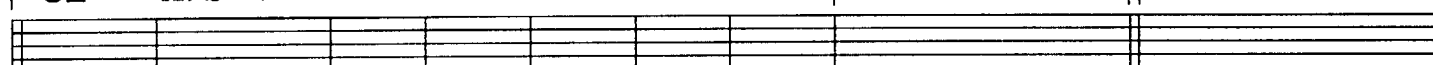
**GΔ AbØ Db7+9 Gb- B7 E- A7 DΔ**

**Play 1st chorus ONLY**  
D.C.

**Play 2nd chorus ONLY**  
Leads to next key

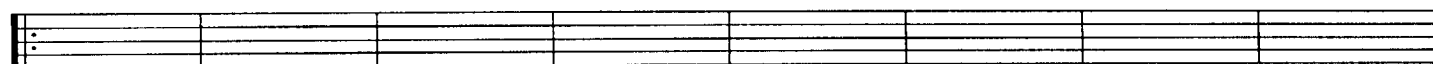
**E- A7**

**F- Bb7**



6

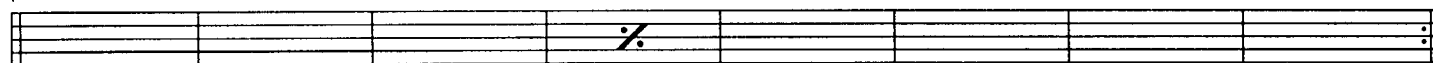
**EbΔ F- EbΔ F- EbΔ F- EbΔ Bb- Eb7**



*pedal Bb (1st chorus only)*

1.

**AbΔ AØ D7+9 G- F#- B7 F- Bb7**



2.

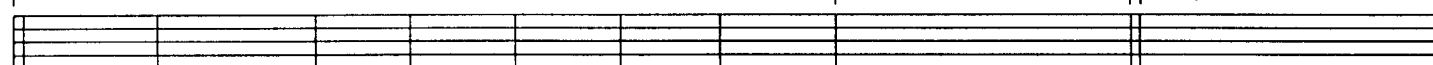
**AbΔ AØ D7+9 G- C7 F- Bb7 EbΔ**

**Play 1st chorus ONLY**  
D.C.

**Play 2nd chorus ONLY**  
Leads to next key

**F- Bb7**

**F#- B7**





# 5. This I Dig - cont.



7

EΔ F#- EΔ F#- EΔ F#- EΔ B- E7

pedal B (1st chorus only) -----

1. AΔ BbØ Eb7+9 Ab- G- C7 F#- B7

2. AΔ BbØ Eb7+9 Ab- Db7 F#- B7 EΔ F#- B7 G- C7

<i>Play 1st chorus ONLY</i> D.C.	<i>Play 2nd chorus ONLY</i> Leads to next key
-------------------------------------	--

8

FΔ G- FΔ G- FΔ G- FΔ C- F7

pedal C (1st chorus only) -----

1. BbΔ BØ E7+9 A- Ab- Db7 G- C7

2. BbΔ BØ E7+9 A- D7 G- C7 FΔ G- C7 Ab- Db7

<i>Play 1st chorus ONLY</i> D.C.	<i>Play 2nd chorus ONLY</i> Leads to next key
-------------------------------------	--

9

GbΔ Ab- GbΔ Ab- GbΔ Ab- GbΔ C#- F#7

pedal Db (1st chorus only) -----

1. BΔ CØ F7+9 Bb- A- D7 Ab- Db7

2. BΔ CØ F7+9 Bb- Eb7 Ab- Db7 GbΔ Ab- Db7 A- D7

<i>Play 1st chorus ONLY</i> D.C.	<i>Play 2nd chorus ONLY</i> Leads to next key
-------------------------------------	--





# 5. This I Dig - cont.



10

GΔ A- GΔ A- GΔ A- GΔ D- G7

pedal D (1st chorus only)

1.

CΔ C#Ø F#7+9 B- Bb- Eb7 A- D7

2.

CΔ C#Ø F#7+9 B- E7 A- D7 GΔ

Play 1st chorus ONLY  
D.C.

Play 2nd chorus ONLY  
Leads to next key

A- D7

Bb- Eb7

11

AbΔ Bb- AbΔ Bb- AbΔ Bb- AbΔ Eb- Ab7

pedal Eb (1st chorus only)

1.

DbΔ DØ G7+9 C- B- E7 Bb- Eb7

2.

DbΔ DØ G7+9 C- F7 Bb- Eb7 AbΔ

Play 1st chorus ONLY  
D.C.

Play 2nd chorus ONLY  
Leads to next key

Bb- Eb7

B- E7

12

AΔ B- AΔ B- AΔ B- AΔ E- A7

pedal E (1st chorus only)

1.

DΔ EbØ Ab7+9 Db- C- F7 B- E7

2.

DΔ EbØ Ab7+9 Db- Gb7 B-

Play 1st chorus ONLY  
D.C.

2. E7

AΔ

Fine  
Abrupt ending



# 6. Giant Steps



♩ = 224

By John Coltrane

Key Number **1**, The Original Key, Is Played 4 Times. All The Rest Are Played Twice.

Musical notation for the treble clef part of "6. Giant Steps". The piece is in 4/4 time. The notation consists of four staves of music. Above the notes, chord symbols are provided for each measure. The first staff contains measures 1-4 with chords: BΔ, D7, GΔ, Bb7, EbΔ, A-, D7. The second staff contains measures 5-8 with chords: GΔ, Bb7, EbΔ, F#7, BA, F-, Bb7, EbΔ. The third staff contains measures 9-12 with chords: EbΔ, A-, D7, GΔ, C#-, F#7, BA. The fourth staff contains measures 13-16 with chords: BA, F-, Bb7, EbΔ, C#-, F#7.



# 6. Giant Steps (Bass Clef)



Key Number **1**, The Original Key, Is Played 4 Times. All The Rest Are Played Twice.

Musical notation for the bass clef part of "6. Giant Steps". The piece is in 4/4 time. The notation consists of four staves of music. Above the notes, chord symbols are provided for each measure. The first staff contains measures 1-4 with chords: BΔ, D7, GΔ, Bb7, EbΔ, A-, D7. The second staff contains measures 5-8 with chords: GΔ, Bb7, EbΔ, F#7, BA, F-, Bb7, EbΔ. The third staff contains measures 9-12 with chords: EbΔ, A-, D7, GΔ, C#-, F#7, BA. The fourth staff contains measures 13-16 with chords: BA, F-, Bb7, EbΔ, C#-, F#7.



# 6. Giant Steps - cont.



Play This Key 4 TIMES, Then Move To Number **2**.

**1** BA D7 GA Bb7 EbΔ A- D7 GA Bb7 EbΔ F#7 BA F- Bb7

EbΔ A- D7 GA C#- F#7 BA F- Bb7 EbΔ

1.  
C#- F#7

2.  
D- G7

**2** This Key And All The Rest Are Played Twice!

CA Eb7 AbΔ B7 EA Bb- Eb7 AbΔ B7 EA G7 CA F#- B7

EA Bb-Eb7 AbΔ D- G7 CA F#-B7 EA

1.  
D- G7

2.  
Eb- Ab7

**3** DbΔ E7 AΔ C7 FΔ B- E7 AΔ C7 FΔ Ab7 DbΔ G- C7

FΔ B- E7 AΔ Eb- Ab7 DbΔ G- C7 FΔ

1.  
Eb- Ab7

2.  
E- A7

**4** DΔ F7 BbΔ C#7 F#Δ C- F7 BbΔ C#7 F#Δ A7 DΔ Ab- Db7

GbΔ C- F7 BbΔ E- A7 DΔ Ab-Db7 GbΔ

1.  
E- A7

2.  
F- Bb7



# 6. Giant Steps - cont.



5

E $\flat$  $\Delta$  F $\sharp$ 7 B $\Delta$  D7 G $\Delta$  C $\sharp$ -F $\sharp$ 7 B $\Delta$  D7 G $\Delta$  B $\flat$ 7 E $\flat$  $\Delta$  A- D7

G $\Delta$  C $\sharp$ -F $\sharp$ 7 B $\Delta$  F- B $\flat$ 7 E $\flat$  $\Delta$  A- D7 G $\Delta$  1. F- B $\flat$ 7 2. F $\sharp$ - B7

6

E $\Delta$  G7 C $\Delta$  E $\flat$ 7 A $\flat$  $\Delta$  D- G7 C $\Delta$  E $\flat$ 7 A $\flat$  $\Delta$  B7 E $\Delta$  B $\flat$ - E $\flat$ 7

A $\flat$  $\Delta$  D- G7 C $\Delta$  F $\sharp$ - B7 E $\Delta$  B $\flat$ -E $\flat$ 7 A $\flat$  $\Delta$  1. F $\sharp$ - B7 2. G- C7

7

F $\Delta$  A $\flat$ 7 C $\sharp$  $\Delta$  E7 A $\Delta$  E $\flat$ - A $\flat$ 7 C $\sharp$  $\Delta$  E7 A $\Delta$  C7 F $\Delta$  B- E7

A $\Delta$  E $\flat$ -A $\flat$ 7 C $\sharp$  $\Delta$  G- C7 F $\Delta$  B- E7 A $\Delta$  1. G- C7 2. A $\flat$ - D $\flat$ 7

8

F $\sharp$  $\Delta$  A7 D $\Delta$  F7 B $\flat$  $\Delta$  E- A7 D $\Delta$  F7 B $\flat$  $\Delta$  D $\flat$ 7 G $\flat$  $\Delta$  C- F7

B $\flat$  $\Delta$  E- A7 D $\Delta$  A $\flat$ - D $\flat$ 7 G $\flat$  $\Delta$  C- F7 B $\flat$  $\Delta$  1. A $\flat$ - D $\flat$ 7 2. A- D7

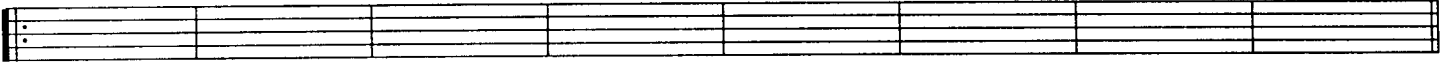


# 6. Giant Steps - cont.



9

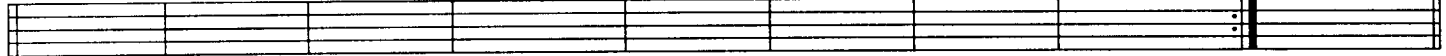
GΔ Bb7 EbΔ Gb7 BΔ F- Bb7 EbΔ Gb7 BΔ D7 GΔ C#- F#7



BΔ F- Bb7 EbΔ A- D7 GΔ C#- F#7 BΔ

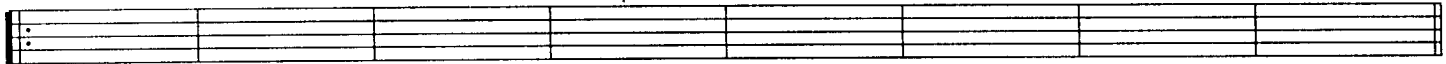
1.  
A- D7

2.  
Bb- Eb7



10

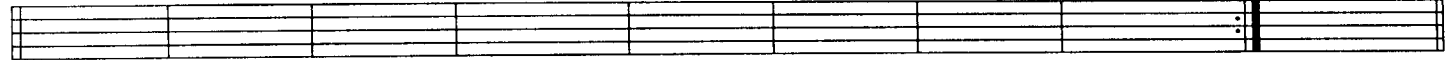
AbΔ B7 EΔ G7 CΔ F#- B7 EΔ G7 CΔ Eb7 AbΔ D- G7



CΔ F#- B7 EΔ Bb- Eb7 AbΔ D- G7 CΔ

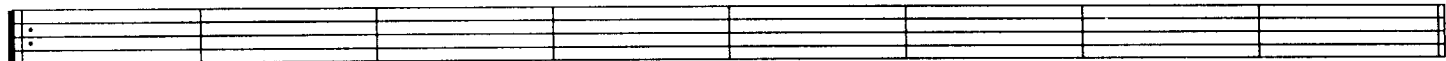
1.  
Bb- Eb7

2.  
B- E7



11

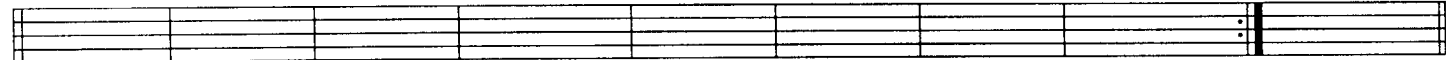
AΔ C7 FΔ Ab7 DbΔ G- C7 FΔ Ab7 DbΔ E7 AΔ Eb- Ab7



DbΔ G- C7 FΔ B- E7 AΔ Eb- Ab7 DbΔ

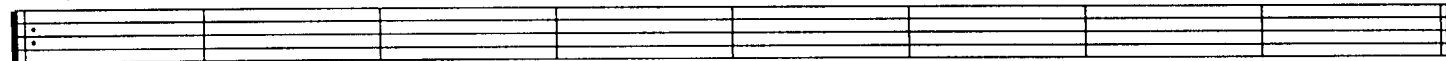
1.  
B- E7

2.  
C- F7

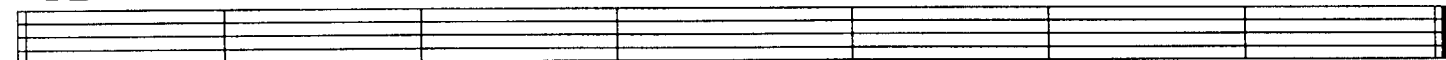


12

BbΔ Db7 GbΔ A7 DΔ Ab- Db7 GbΔ A7 DΔ F7 BbΔ E- A7



DΔ Ab- Db7 GbΔ C- F7 BbΔ E- A7 DΔ



*ritard.*

*Fine*