

# SOLAR (PAT METHENY GUITAR SOLO)

FAST SWING

(8 BAR DRUM INTRO)

C-7 G-7 C7

FΔ7 F-7 Bb7

E6Δ7 Eb-7 A67 D6Δ7 D-7b5 G7b9

C-7 G-7 C7

FΔ7 F-7 Bb7

E6Δ7 Eb-7 A67 D6Δ7 D-7b5 G7b9

C-7 G-7 C7

1

FΔ7 F-7 Bb7

E6Δ7 Eb-7 A67 D6Δ7 D-7b5

C-7 G-7 C7 G7b9

2

# SOIAR (PAGE 3)

E♭Δ7

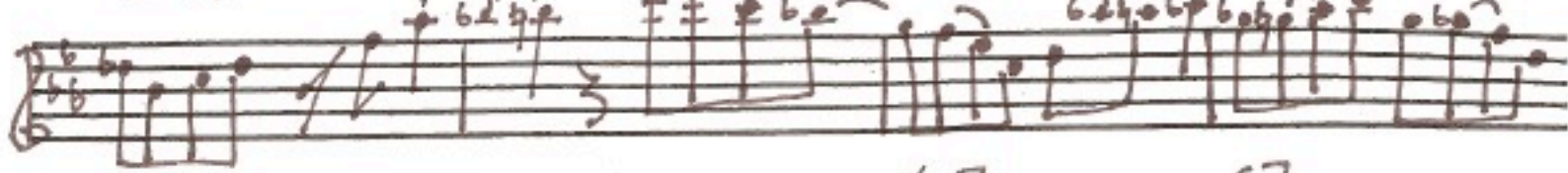
E♭-7

A♭7

D♭Δ7

D-7♭5

G7♭9



C-7

G-7

C7

6



FΔ7

F-7

B♭7



E♭Δ7

E♭-7

A♭7

D♭Δ7

D-7♭5

G7♭9

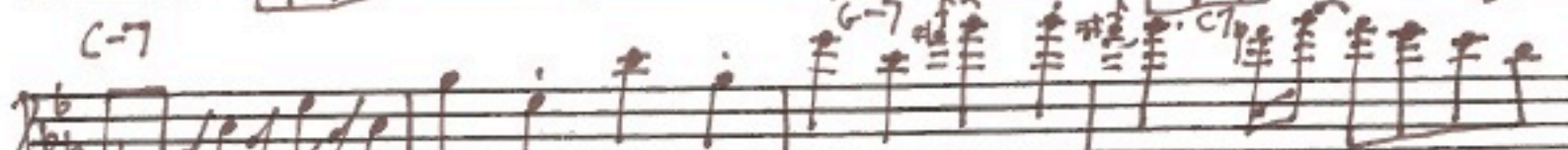


C-7

G-7

C7

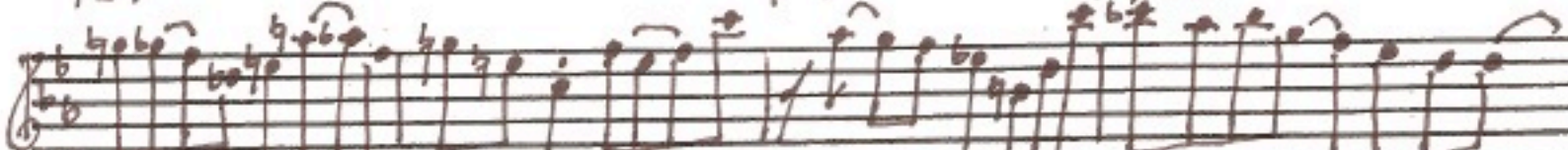
7



FΔ7

F-7

B♭7



E♭Δ7

A♭7

D♭Δ7

D-7♭5

G7♭9

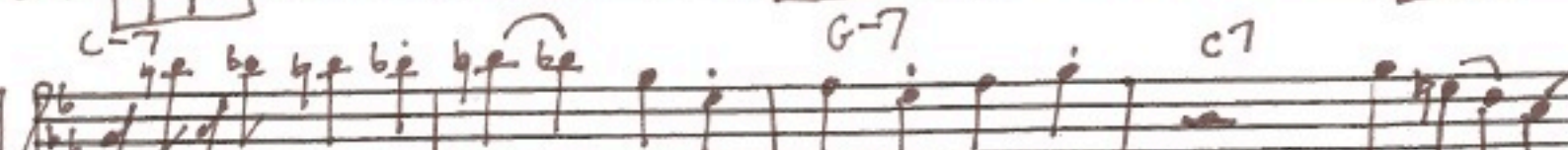


C-7

G-7

C7

8



FΔ7

F-7

B♭7



E♭Δ7

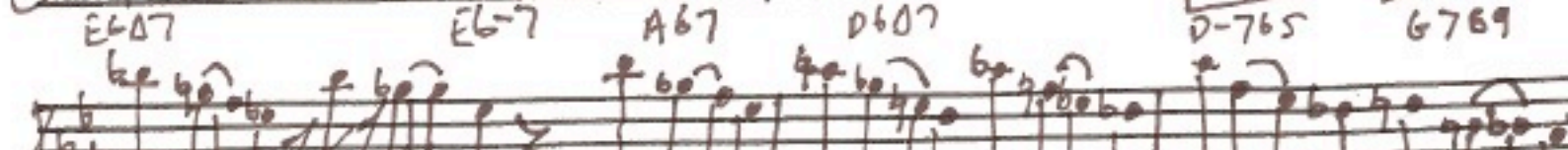
E♭-7

A♭7

D♭Δ7

D-7♭5

G7♭9



# SOLAR (PAGE 2)

FΔ7

F7

B♭7

E♭Δ7

E♭-7

A♭7

D♭Δ7

D-7♭5

G7♭9

C-7

G-7

C7

3

FΔ7

F-7

E♭Δ7

E♭-7

A♭7

D♭Δ7

D-7♭5

G7♭9

C-7

G-7

C7

4

FΔ7

F-7

B♭7

E♭Δ7

E♭-7

A♭7

D♭Δ7

D-7♭5

G7♭9

C-7

G-7

C7

5

FΔ7

F-7

B♭7

# SOLAR (PAGE 4)

9

C-7 G-7 C7

FΔ7 F-7 Bb7

EbΔ7 Eb-7 Ab7 DbΔ7 D-7b5 G7b9

10

C-7 G-7 C7

FΔ7 F7 Bb7

EbΔ7 Eb-7 Ab7 DbΔ7 D-7b5 G7b9

11

C-7 G-7 C7

FΔ7 F-7 Bb7

EbΔ7 Eb-7 Ab7 DbΔ7 D-7b5 C7

12

C-7 G-7 C7

C-7 G-7 C7

# SOLAR (PAGE 5)

FΔ7

F-7

Bb7

Handwritten musical notation for the first system, featuring a treble clef staff with notes and rests, and a bass clef staff with chords. Chords are labeled  $E_b\Delta 7$ ,  $E_b-7$ ,  $A_b7$ ,  $D6-7$ ,  $D-7b5$ , and  $G7b9$ .

Handwritten musical notation for the second system, featuring a treble clef staff with notes and rests, and a bass clef staff with chords. Chords are labeled  $C-7$ ,  $G-7$ , and  $C7$ .

13

Handwritten musical notation for the third system, featuring a treble clef staff with notes and rests, and a bass clef staff with chords. Chords are labeled  $F\Delta 7$ ,  $F-7$ , and  $Bb7$ .

Handwritten musical notation for the fourth system, featuring a treble clef staff with notes and rests, and a bass clef staff with chords. Chords are labeled  $E_b\Delta 7$ ,  $E_b-7$ ,  $A_b7$ ,  $D6\Delta 7$ ,  $D-7b5$ , and  $G7b9$ .

Handwritten musical notation for the fifth system, featuring a treble clef staff with notes and rests, and a bass clef staff with chords. Chords are labeled  $C-7$ ,  $G-7$ , and  $C7$ .

14

Handwritten musical notation for the sixth system, featuring a treble clef staff with notes and rests, and a bass clef staff with chords. Chords are labeled  $F\Delta 7$ ,  $F-7$ , and  $Bb7$ .

Handwritten musical notation for the seventh system, featuring a treble clef staff with notes and rests, and a bass clef staff with chords. Chords are labeled  $E_b\Delta 7$ ,  $E_b-7$ ,  $A_b7$ ,  $D6\Delta 7$ ,  $D-7b5$ , and  $G7b9$ .

Handwritten musical notation for the eighth system, featuring a treble clef staff with notes and rests, and a bass clef staff with chords. Chords are labeled  $C-7$ ,  $G-7$ , and  $C7$ .

15

Handwritten musical notation for the ninth system, featuring a treble clef staff with notes and rests, and a bass clef staff with chords. Chords are labeled  $F\Delta 7$ ,  $F-7$ , and  $Bb7$ .

Handwritten musical notation for the tenth system, featuring a treble clef staff with notes and rests, and a bass clef staff with chords.

# SOLAR (PAGE 6)

Handwritten musical score for guitar, titled "SOLAR (PAGE 6)". The score is written on ten staves, with measures 16, 17, and 18 boxed on the left margin. The music is in a key with two flats (B-flat major or D minor) and a 4/4 time signature. The notation includes chords, melodic lines with slurs and ties, and various rhythmic markings.

**Staff 16:** Chords: E6Δ7, Eb-7, A67, D6Δ7, D-7b5, G7b9, C-7, G-7, C7, F-7, B67.

**Staff 17:** Chords: E6Δ7, Eb-7, A67, D6Δ7, D-7b5, G7b9, C-7, G-7, C7, F-7, B67.

**Staff 18:** Chords: E6Δ7, Eb-7b5, A67, D6Δ7, D-7b5, G7b9, C-7, F-7, B67, E6Δ7, Eb-7, A67, D6Δ7, D-7b5, G7b9.

# SOLAR (PAGE 7)

C-7

G-7

C7

Handwritten musical notation for the guitar part of 'Solar' (Page 7). The notation is written on three staves. The first staff shows a melodic line with notes and rests. The second and third staves show chordal accompaniment with various chords and rhythmic patterns. Chord labels are written above and below the notes.

Chord labels visible in the image:

- F#D7
- F-7
- Bb7
- E6D7
- Eb-7
- A67
- D6D7
- D7b5
- A67b9

INTO BASS SOLO ...