

Stairway To Heaven (remastered)

T. u. M.: Jimmy Page, Robert Plant

Melodie:	linke Hand = E-Piano / rechte Hand = Jazz Organ		Singlefinger	
Rhythmus:	Rock Shuffle (♩ = ca. 85)	Modi:	Fingered	Originaltonart
Schlagmuster:	1 0 3 4+		Piano	<input checked="" type="checkbox"/>

Am E6-/G# C/G D Fmaj7 G Am

Intro Western Guit.

Rhythm off
Linke Hand spielt Akkorde

Am E6-/G# C/G D Fmaj7 G Am

Recorder

Linke Hand spielt 8/8 Akkordauflösung mit den angegebenen Tönen der Akkorde beginnend mit dem tiefsten Ton

C D Fmaj7 Am C G(add5) D

C D Fmaj7 Am C D G Fmaj7

Unterstimme Orig. ges. tiefer

Jazz Organ

There's a

Am E⁶/G[#] C/G D

1 2 + 3 4e + e 1 3 2 + 3 + 4 +

La - dy who's sure all that glit - ters is gold and she's
gets there she knows if the stores are all closed with a

Fmaj⁷ G Am G Am C D

1 2 + 3 + 4e+ e 1 + 2 3 4 + 1 + 2 3 4 1 2 + 3 4

buy - ing a stair - way to hea - ven. When she
word she can get what she came for. Hoooh

Fmaj⁷ Am C G D C D

1 2 + 3 + 4 + 1 2 + 3 + 4 + 1 + 2 3 4 + 1 2 + 3 e+e 4e + e

bei Wdh. → Am E⁶/G[#]

hoooh and she's buy - ing a stair - way to heav - en. There's a sign on the wall but she
tree by the brook there's a

C/G D Fmaj⁷ Fmaj⁷ Am G/H C D G Fmaj⁷

1 2 + 3 e+e 4 + 1 2 3 + 4 + 1 2 3 + 4 + 1 + 2 3 4 +

wants to be sure cause you know some - times words have two mean - ings. In a
song - bird who sings some - times all of our thoughts are mis -

G Am Am E⁶/G[#] C/G D

1 + 2 3 + 4 + 1 + 2 + 3 + 4 + 1 e + e 2 e+e 3 e + e 4 e + e

Recorder

-giv - en.

Fmaj⁷ G Am Hm⁷ Am⁷ (Am) D

1 e + e 2 e+e 3 e + e 4 e+e 1 + 2 3 4 1 2 3 4 +

D7 Am7 (Am) G D C D

1 + 2 3e+ e 4e + e 1 e+e 2 3 + 4 1 + 2 3 + 4 +

Hooh, _____ it makes me won - der, _____

Am7 (Am) D D7 Am7 G D C D

1 2 3 + 4 + 1 e + e 2 + 3e+ e 4 + 1e+ e 2 + 3e+ e 4 + 1 + 2 + 3 + 4 +

hooh, _____ 't makes me won - der. _____

hooh, _____ 't real-ly makes me won - der. _____

There's a
And it's

to Coda ⊕

C(add12) G/H Am C G/H G

1 2 + 3 e+e 4 + di 1 2 3 e+e 4 + 1 2 + 3 + 4 +

feel - ing I get when I look to the west and my spir - it is cry - ing for leav - thoughts I have seen rings of smoke through the trees and the voic - es of those who stand look -

Am G Am C(add12) G/H Am7 (Am) D

1 + 2 3 4 + 1 + 2 3 4 + 1 + 2 + 3 + 4 + 1 2 3 + 4 +

- ing. In my (look-)ing.

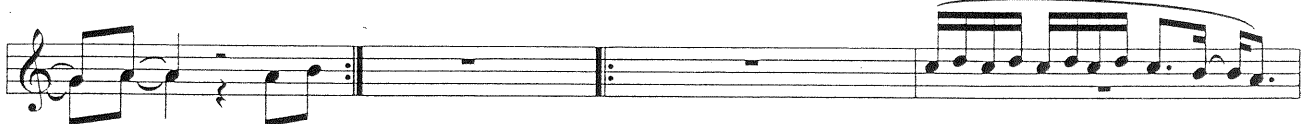
D.S. al Coda ⊕

Coda C(add12) G/H Am Cadd12 G/H

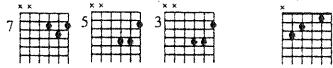
1 2 + 3 e+e 4 + 1 2 + 3 e+e 4 + 1 2 3 + 4 +

whis - pered that soon if we all call the tune then the pi - per will lead us to reas - new day will dawn for those who stand long and the for - ests will ech - o with laugh -

G Am C G/H Am⁷ (Am) D D⁷
 1 + 2 3 4 + 1 2 3 4 1 2 3 + 4 + 1 e + e 2 e + e 3e + e 4 e+e



on.____ And a (Wdh. :) o-u-o-u-o-u o-u-ou_____



Am⁷ (Am) G D C D C G/H Am
 1 2 3 + 4 + 1 + 2 + 3 + 4 1 + 2 + 3 + 4e + e 1 + 2 e + e 3 + 4



Drum-Fill Rhythm start



If there's a bus - tle in your hedge row__don't be a-larmed now
 Yes there are two paths you can go__ by__ but in the long run
 Your head is hum-ning and it won't__ go__ in case you don't know
 Dear La - dy can you hear the wind__blow__ and if you know

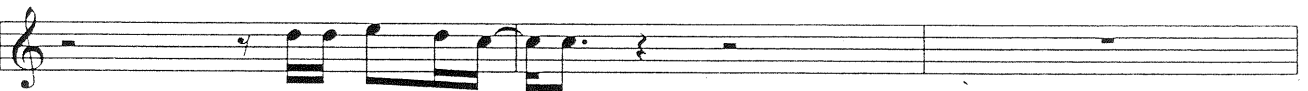
C G/H G Am C G/H Am⁷ (Am) D
 1 + 2 + 3 + 4 e +e 1 + 2 3 4 1 2 3 4 1 2 3 + 4 +



nach Wdh. to Coda ⊕⊕

it's just a spring clean for the May - queen.
 and there's still time to change__ the road you're on.
 the pip - er's call - ing you to join__ him.
 your stair - way lies on the whis - p'ring wind,_____

D⁷ Am⁷ (Am) G D C D
 1 2 3e + e 4e + e 1 e+e 2 3 + 4 + 1 + 2 + 3 + 4



and it makes me won - der,

Am⁷ (Am) D D⁷ Am⁷ (Am) G D C D
 1 2 3 + 4 + 1 2 3 4 + 1 + 2 3 + 4 + 1 + 2 + 3 + 4 +



oh ho ho_____

D.S. ⊗ ⊗ al Coda ⊕⊕
 inklusive Wdh.



C(add12)

G/H

D

D(9)

D Dsus4

D(9)

Dsus4

D(9)

D



linke Hand nur Akkord „D“

1 2 3 4 1 2 3 4e + e di 1 2 + e di 3 4e + e di



Dsus4

D

C

C(add5-)

C

C(add5-)

C

D(9) D

1 2 3 1 2 + 3e + e 4 1 2 + 3e + e 4 5 +

Dsus4

D(9)

D

Dsus4

D(9)

D

Dsus4

D

C

Cadd5-

C

C(add5-)

C

8 9

1 2e + e di 3 4e + e di 1 2 3 1 2 + 3 4 5 6 7 8 9



G/H

G(7+)/H

G/H

Am

G

F

1 2 e + e 3 + 4 e + e

1 2 3 e + e 4 e + e

1 e + e 2 3 + 4 +

Dist. Guit.-Solo

Am

G

F

Am

G

1e+ e 2 + 3 4e+ e 1 e + e 2 e+e 3 + 4 e+ e 1 e + e 2 e + e 3e + e 4 +

F
1e + e 2 e + e 3 e + e 4 e + e

Am
1e + e 2 e + e 3 e + e 4 e + e

G

Musical notation for the first system, including a treble clef staff with a melodic line and a bass clef staff with fret numbers and chords.

F
1e + e 2 e+e 3e + e 4 e + e

Am

G

Musical notation for the second system, featuring triplets and a "Bending" instruction in the bass staff.

F
1 + 2 + 3 e+e 4

Am

G

Musical notation for the third system, including a double bar line and a slash in the bass staff.

F
1 e + e 2 e + e 3 e + e 4 e + e

Am

G

Musical notation for the fourth system, including a "PO" instruction in the bass staff.

F
1 + 2 e+ e 3 e + 3 4 e + e

Am

G

F

Musical notation for the fifth system, including a double bar line and a slash in the bass staff.

