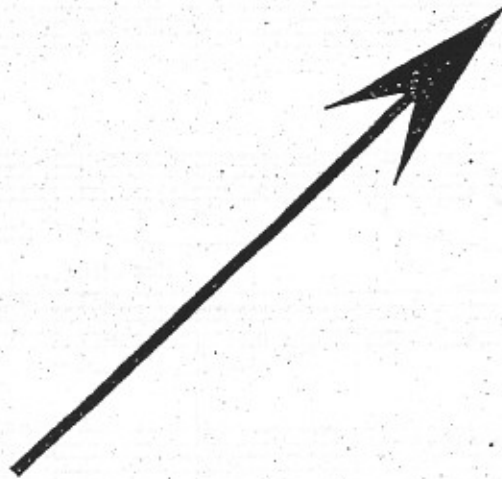


NO. 22 **ENDLESS NIGHT**

[Rev. 8/26/99]



5 Freely-Colla Voce

SIMBA:

6 7 8

Where has the star - light gone? Dark is the day

Kbd 3

D G/D D D/C; Bm D/A G D/F#

9 10 11 12

How can I find my way home?

- Pan Fl. Kod 3

D Em7 D/F# A G/A

13 14 15 16

Home is an emp - ty dream Lost to the night

Kbd 3

D Gtr. Em/D D D/C; Bm D/A G D/F#

- Bass

17 18 19

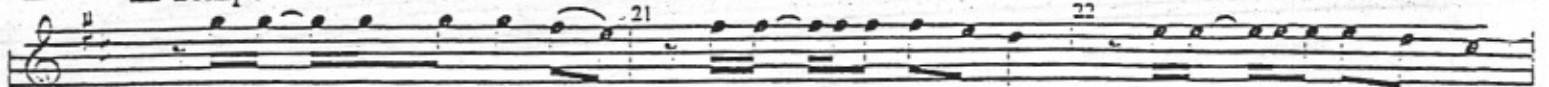
Fath - er I feel so a - lone.

Drums

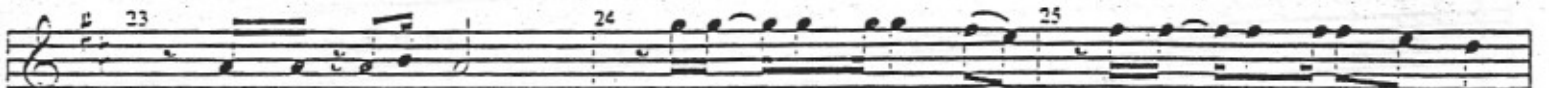
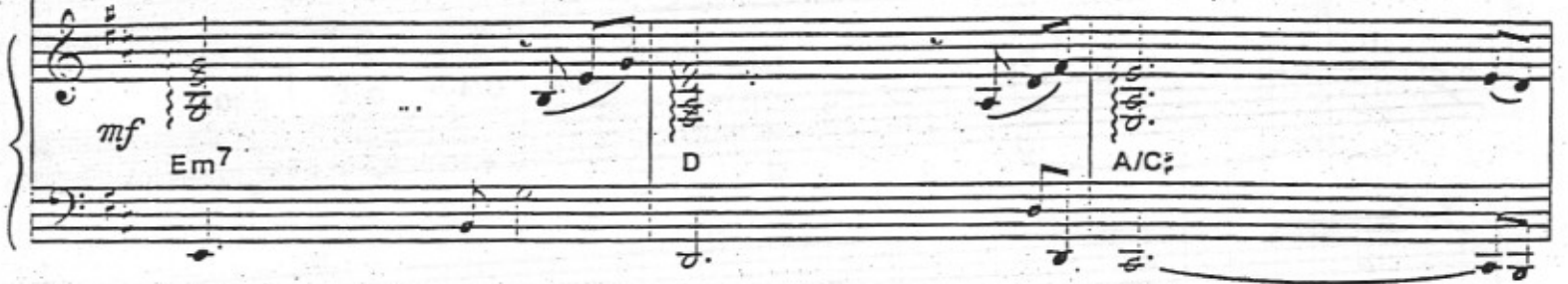
D Em7 D/F# D A

20

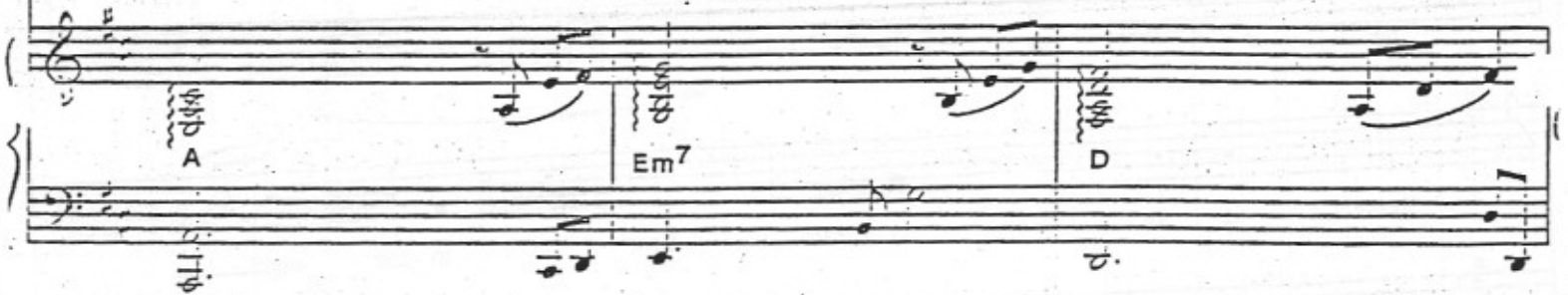
In Tempo



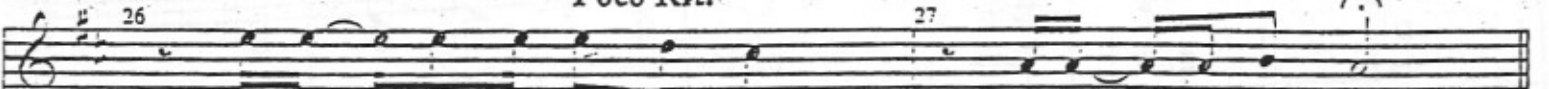
You pro - mised you'd be there— When-ev - er I need-ed you When-ev - er I call your name



You're not an-y-where I'm try - ing to hold on— Just wait - ing to hear your voice



Poco Rit.



One word,— Just a word will do To end— this night - mare



Cymbal swell

28 A Tempo

When will the dawn - ing break? Oh, end - less night

Gentle folk-rock feel Pan Flute

mp + Strings
 D Em/D D D/C; Bm D/A G D/F;

Sleep - less I dream of the day

D Em⁷ D/F; Em⁷ D A

35 When you were by my side Guid - ing my path

mf D Em/D D D/C; Bm D/A G D/F;

39 Fath - er I can't find the way

D Em⁷ D/F; Em⁷ D A + Horns

42 43 44

You pro - mised you'd be there— When-ev - er I need-ed you When-ev - er I call your name

f Em⁷ D A/C:

+ Ironbones

45 46 47

You're not— an - y - where I'm try - ing to hold on— Just wait - ing to hear your voice

A Em⁷ D

48 49

One word.— Just a word — will do To end— this night - mare

A/C: A

50

CHORUS:

S/A:

Musical notation for Soprano/Alto (S/A) part, measures 50-52. The notation is in treble clef with a key signature of one sharp (F#). It consists of a series of chords and melodic lines.

pp

I know that the night must end—

And—that the sun will rise

And—that the sun will r

T:

Musical notation for Tenor (T) part, measures 50-52. The notation is in treble clef with a key signature of one sharp (F#). It consists of a series of chords and melodic lines.

And—that the sun will rise

And—that the sun will r

B:

Musical notation for Bass (B) part, measures 50-52. The notation is in bass clef with a key signature of one sharp (F#). It consists of a series of chords and melodic lines.

pp Hoo—

Kbd 2 [Harp]

Musical notation for Keyboard 2 (Harp) part, measures 50-52. The notation is in treble and bass clefs with a key signature of one sharp (F#). It consists of a series of chords and melodic lines.

p

("D" Pedal)

53

54

55

Musical notation for Soprano/Alto (S/A) part, measures 53-55. The notation is in treble clef with a key signature of one sharp (F#). It consists of a series of chords and melodic lines.

I know that the clouds must clear—

And—that the sun will shine

And—that the sun will shine

Musical notation for Tenor (T) part, measures 53-55. The notation is in treble clef with a key signature of one sharp (F#). It consists of a series of chords and melodic lines.

And—that the sun will shine

And—that the sun will shine

Musical notation for Bass (B) part, measures 53-55. The notation is in bass clef with a key signature of one sharp (F#). It consists of a series of chords and melodic lines.

Hoo—

Musical notation for Keyboard 2 (Harp) part, measures 53-55. The notation is in treble and bass clefs with a key signature of one sharp (F#). It consists of a series of chords and melodic lines.

56

SIMBA:

57

58

I know — that the night must end — And — that the sun will rise And — that the sun will rise

I know that the night must end — And — that the sun will rise And — that the sun will rise

poco - - - a - - - *poco - - - cresc.*

And — that the sun will rise And — that the sun will rise

And — that the sun will rise And — that the sun will rise

1st x Vlns, 2nd x Hrs

poco a poco cresc.

D G A B m G A D

59 60 61

I know — that the clouds must clear — And — that the sun will shine I kno

I know that the clouds must clear — And — that the sun will shine And that the sun will shine.

poco . . . *a* . . . *poco* . . . *cresc.* . . .

And — that the sun will shine And that the sun will shine.

And — that the sun will shine And — that the sun will shine

D G A B m G A D

Detailed description: This is a page of a musical score for piano, voice, and conductor. The score is in G major and 4/4 time. It features a vocal line at the top with lyrics, a piano accompaniment with chords, and a guitar part with chords. The lyrics are: "I know — that the clouds must clear — And — that the sun will shine I kno". The piano part includes dynamic markings like *poco* and *cresc.*. The guitar part has chords: D, G, A, B m, G, A, D. Measure numbers 59, 60, and 61 are indicated at the top.

* 56A

57A

58A

yes, I know — the sun — will rise — Yes, I know

mf I know that the night must end — And — that the sun will rise And — that the sun will rise

mf And — that the sun will rise And — that the sun will rise

(breathy)

Ho Ho Ho And — that the sun will rise And — that the sun will rise

1st: x Vins. 2nd x Hrs

poco a poco cresc.

D G A B m G A D

* NOTE: In the orchestra score and pit parts bars 56A through 61A do not exist as separate measures. They are incorporated into repeats of bars 56 through 61.

59A I know the clouds must clear

60A

61A

I know that the clouds must clear — ∴ And—that the sun will shine And—that the sun will shine

And—that the sun will shine And—that the sun will shine

Ho And—that the sun will shine And—that the sun will shine

D G A Bm G A D

62

I know that the night—must end— I know that the sun— will rise And I'll hear your voice deep in

I know that the night must end— And— that the sun will rise And— that the sun will rise

And— that the sun will rise And— that the sun will rise

(breathy)

Ho Ho Ho And— that the sun will rise And— that the sun will rise

- Pan Fl.

D G A B m G A D

65 side. 66 I know that the night must end 67

I know that the clouds must clear — And that the sun will shine And that the sun will shine

And that the sun will shine And that the sun will shine

Ho And that the sun will shine And that the sun will shine

D G A Bm G A D

Vamp 'til Quick Cut-Off on Conductor's Cue

68 69 70

And— that the clouds— must clear— Oh— the sun, — the sun — wil.

f I know— that the night must end— And— that the sun will rise And— that the sun will rise

f And— that the sun will rise And— that the sun will rise

Ho ho ho And— that the sun will rise And— that the sun will rise

+ Flute

D *f* G A Bm G A D

