

PIANO MAN

Words and Music by
Billy Joel

Moderately

1. It's	nine	o -	clock	on	a	Sat - ur - day,	The
(2. Now)	John	at	the	bar	is	a friend of mine,	He
(3. Now)	Paul	is	a	real - es - tate	nov - el - ist,		Who
(4. It's a)	pret - ty	good	crowd	for	a	Sat - ur - day,	And the

F C/E bass D7 G C

reg - u - lar crowd shuf - fles in There's an old man
 gets me my drinks for free, And he's quick with a
 nev - er had time for a wife, And he's talk - in' with
 man - ag - er gives me a smile 'Cause he knows that it's

Em/B bass Am C/G bass F G11

— sit - ting next to me Mak - in' love to his ton - ic and
 joke or to light up your smoke But there's some - place that he'd rath - er
 Dav - y who's still in the Nav - y And prob - ab - ly will be for
 me they've been com - in' to see To for - get a - bout life for a

C F/C bass Cmaj7 G11 C

gin. He says, "Son, can you
 be. He says, "Bill, I be -
 life. And the wait - ress is
 while. And the pia - no

mf

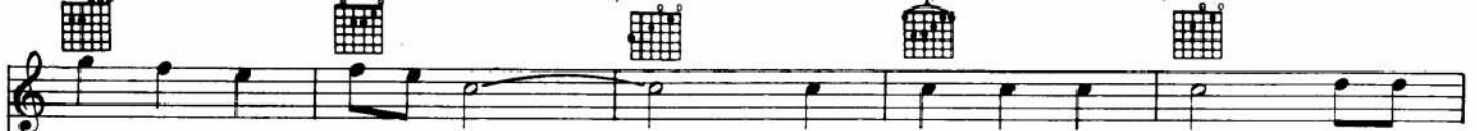
Em/B bass

Am

C/G bass



C/E bass



play me a mem - o - ry? I'm not real - ly sure how it
 lieve this is kill - ing me," As a smile ran a - way from his
 prac - tic - ing pol - i - tics, As the bus - 'ness - men slow - ly get
 sounds like a car - ni - val And the mic - ro - phone smells like a



D7

G

C

Em/B bass

Am



goes, But it's sad and it's sweet and I knew it com -
 face "Well, I'm sure that I could be a mov - ie
 stoned Yes, they're shar - ing a drink they call lone - li -
 beer And they sit at the bar and put bread in my



C/G bass



plete When I wore a young - er man's clothes."
 star If I could get out of this place."
 ness But it's bet - ter than drink - in' a lone,
 jar And say "Man, what are you do - in' here?"



Am

Am/G bass

D7/F# bass



Am



Da da da da de de da da da
 Da da da de de da da da
Instrumental
 Da da da de de da da da



Am/G bass

D7/F# bass

D7



G/F bass



de de da da da
 de de da da da
 de de da da da



C/E bass

G7/D bass

C

Em/B bass

Am



Sing us a song, you're the pia - no man



C/G bass



F



C/E bass



D7



Sing us a song to - night.



Em/B bass



Well, we're all in the mood for a mel - o - dy.

C/G bass



And you've got us feel - in' al - right.

F/C bass



Cmaj7



1, 2, 3.



4.



D. C. al Fine

- 2. Now
- 3. Now
- 4. It's a