

Sun And Moon

Music by Claude-Michel Schönberg
Lyrics by Richard Maltby Jr. & Alain Boublil
Adapted from original French Lyrics by Alain Boublil

Dolce

Kim

Allegretto amabile
E(add 9)

You are_

sun - light_ and I moon joined by_ the gods of for - tune,

mid - night and high noon shar - ing_ the sky. We have been

F#m

Bsus

rit.
B7

Chris

a tempo
E(add 9)

E(add 9)

musical score for the first system, including vocal line and piano accompaniment. The vocal line starts with a whole rest, followed by the lyrics "You came here like a blessed, you and I." The piano accompaniment features a steady eighth-note bass line and a treble line with chords and moving lines.

E/A

A

E/G#

A/B

B

A

F#m/B

B

musical score for the second system, including vocal line and piano accompaniment. The vocal line has lyrics "mys - tr'y... I'm from a world that's so diff - 'rent from". The piano accompaniment continues with a consistent rhythmic pattern.

A/B

B

C#m

A

E/G#

F#m

musical score for the third system, including vocal line and piano accompaniment. The vocal line has lyrics "all that you are. How in the light of one night did we". The piano accompaniment concludes the piece with a final chord.

piu mosso

B E B/A A B/A A B G#m



come so far?

Kim

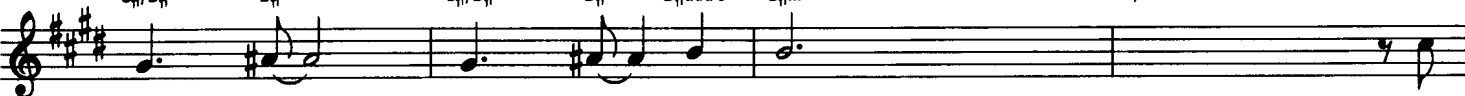


Out - side_ day starts to dawn.



poco a poco piu mosso.

C#/D# D# C#/D# D# D#add5 G#m A/B Bb



Your moon still floats on high, the



The birds a-wake.



E6 G/A A G/A A/G



stars shine too. I reach for you



My hands still shake



Appassionato

F#m 3 A/E 3 Dsus D Dsus D G/D G6/D

and we meet in the sky. _____

and we meet in the sky. _____

8va

ff

Detailed description: This system contains the first two vocal staves and the first two staves of the piano accompaniment. The vocal lines feature triplets and a melodic line with a long note. The piano accompaniment includes chords and a bass line with eighth notes. A dynamic marking of *ff* is present.

G/D G6/D G/A A G/A A F#m/B Bm

Detailed description: This system shows the piano accompaniment for the second system. It features a series of chords in the right hand and a corresponding bass line in the left hand. The chords are G/D, G6/D, G/A, A, G/A, A, F#m/B, and Bm.

loco

F#m/A Bm/A G D/F# Em A

rall.

Detailed description: This system shows the piano accompaniment for the third system. It includes chords and a bass line. A dynamic marking of *loco* is present at the beginning, and *rall.* is at the end. The chords are F#m/A, Bm/A, G, D/F#, Em, and A.

a tempo tranquillo

Kim
D(add 9)

D(add 9)

G

G

You are — sun - light and I moon joined here —
p

D/F#

Em

A

D

rall.

bright - 'ning the sky with the flame of love.
rall.

Both

G(susC#)

G

Em7

D

D

Made of — sun - light moon light.
colla voce *p* *pp*